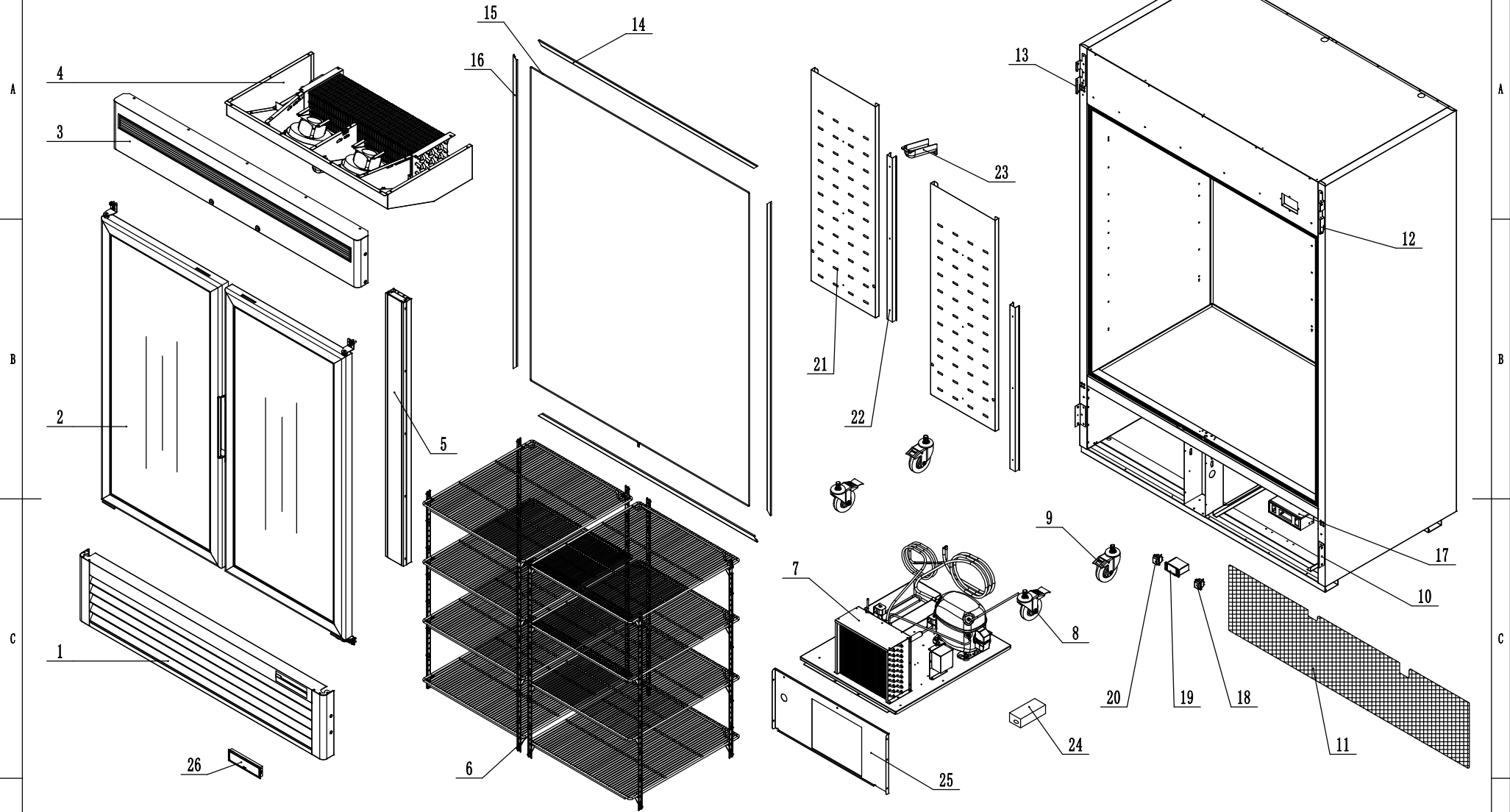


20221.6



26	W0409887	Controller Cover		1	17	W04098832	Controller Braket		1	8	B0604421	4" Castor With Brake		2	
25	85031901	Wind deflector unit		1	16	W04100062	Left-Right Frame Cover		2	7	8703ES-CCA	Comp&Cond Assembly		1	
24	W0399147	Power Supply	200W	1	15	W0210967	Cabinet Heater Pipe		1	6	8703GR-SA	Shelf Assembly		1	
23	W0409081	A drain protection		1	14	W04100068	Top-Bottom Frame Cover		2	5	8703ES-MA	Mullion Assembly		1	
22	80011041	Back wind deflector stents		2	13	85041610	Left-top Fastener For Top Panel		1	4	8703GR-EA	Evaporator Assembly		1	
21	80021040	Back wind deflector	SUS430	2	12	85041609	Right-top Fastener For Top Panel		1	3	8503GR-MTPA	Top Panel Assembly		1	
20	W0308018	Light Switch		1	11	W0402634	Back Bottom Barriar		1	2	8703-DA	Door Assembly		1	
19	W0302175	Digital Controller		1	10	85041801	Fastener For Bottom Panel		2	1	85030420	Bottom Panel		1	
18	W0308019	Power Switch		1	9	B0604413	4" Castor Without Brake		2	Material code	English Name		MATERIAL	QUANTITY	Remark

1

2

3

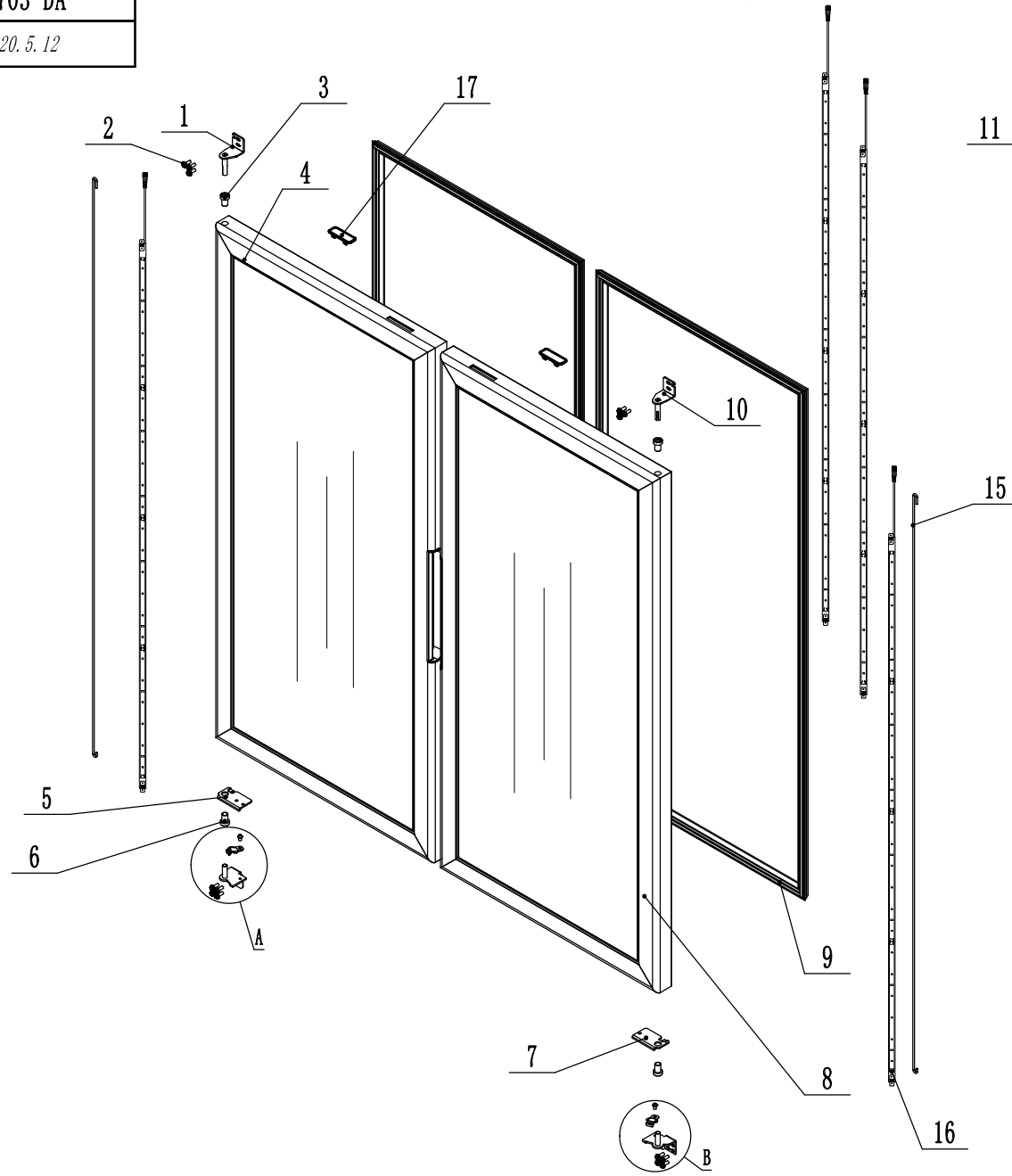
4

5

6

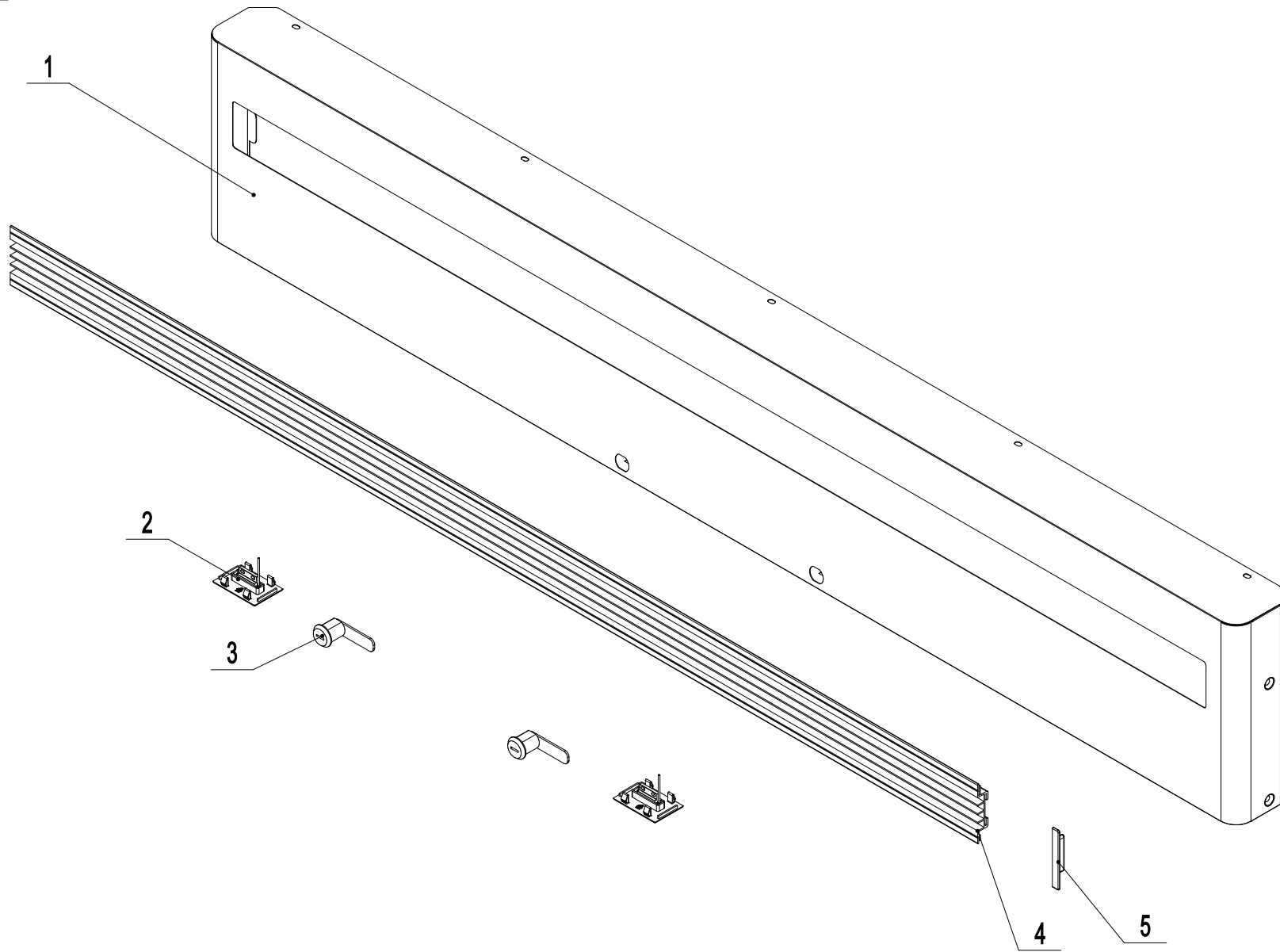
8703-DA

2020.5.12



17	W0409163	Showcase Magnetic Steel		2	
16	W0304081	LED Light		4	
15	W0604933	Door Spring Bar		2	
14	W0604024	Right-Bottom Hinge	SUS304	1	
13	B0507015	Screw M6x8		2	
12	W0604038	Door Brake-Bottom	SUS304	2	
11	W0604025	Left-Bottom Hinge	SUS304	1	
10	W0604022	Right-Top Hinge	SUS304	1	
9	W0404579	Door Gasket		2	
8	W0412809	Right Glass Door		1	
7	W0604030	Door Brake -Right	SUS304	1	
6	W0409843	Door Shaft Sleeve-Bottom	PA66	2	
5	W0604031	Door Brake -Left	SUS304	1	
4	W0412814	Left Glass Door		1	
3	W0409842	Door Shaft Sleeve-Top	PA66	2	
2	B0506077	Screw M6x16		14	
1	W0604023	Left-Top Hinge	SUS304	1	
序号	Material code	English Name	MATERIAL	QUANTITY	Remark

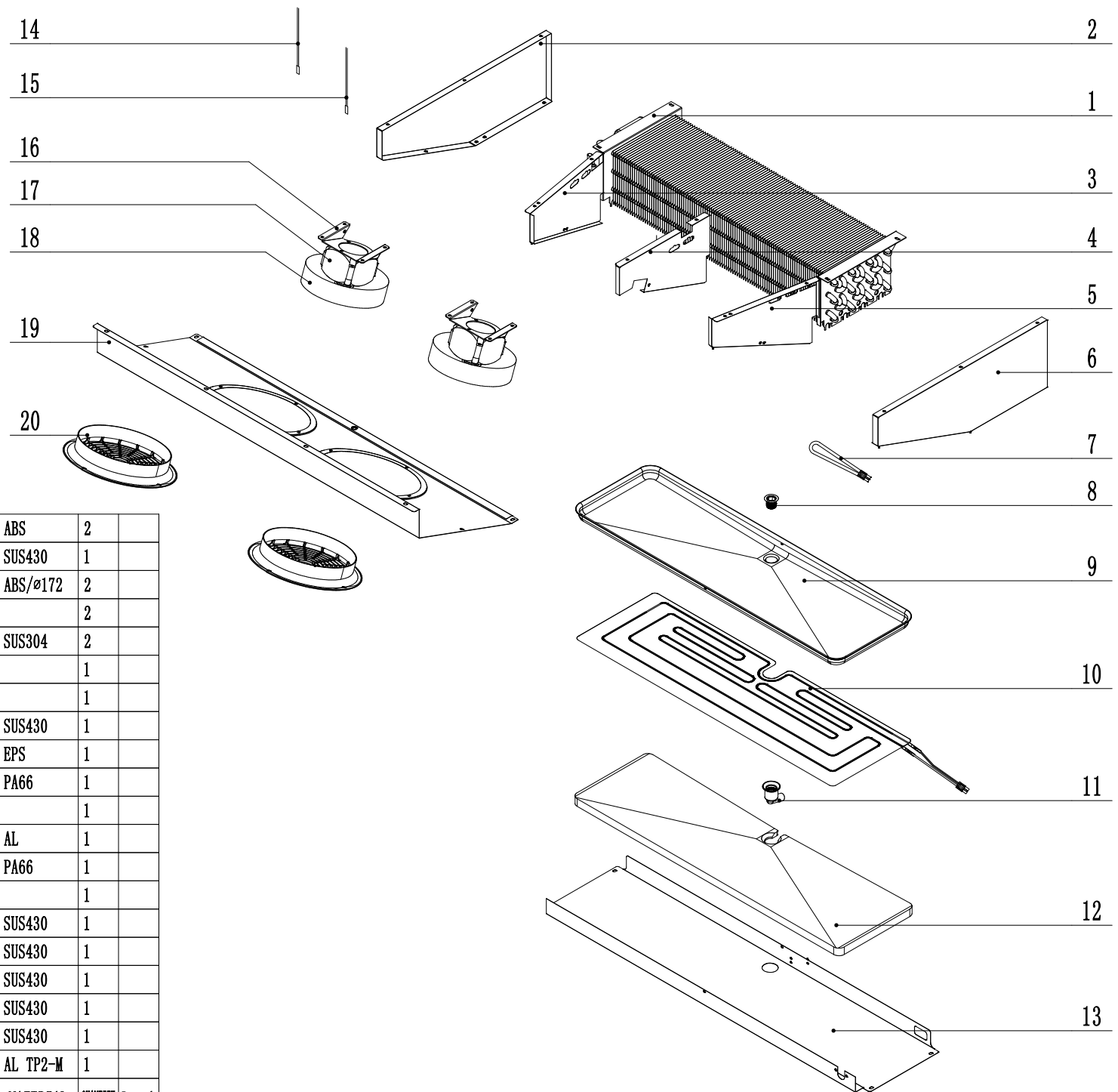
8503GR-MTPA



5	W0409272	Black Grille Clip		2	
4	W0410352	Black Grille		1	
3	W0604007	Lock		2	
2	W0409161	Gate Magnetic Switch		2	
1	85031425-430	Top Panel	SUS430	1	
序号	Material code	English Name	MATERIAL	QUANTITY	Remark

8703GR-EA

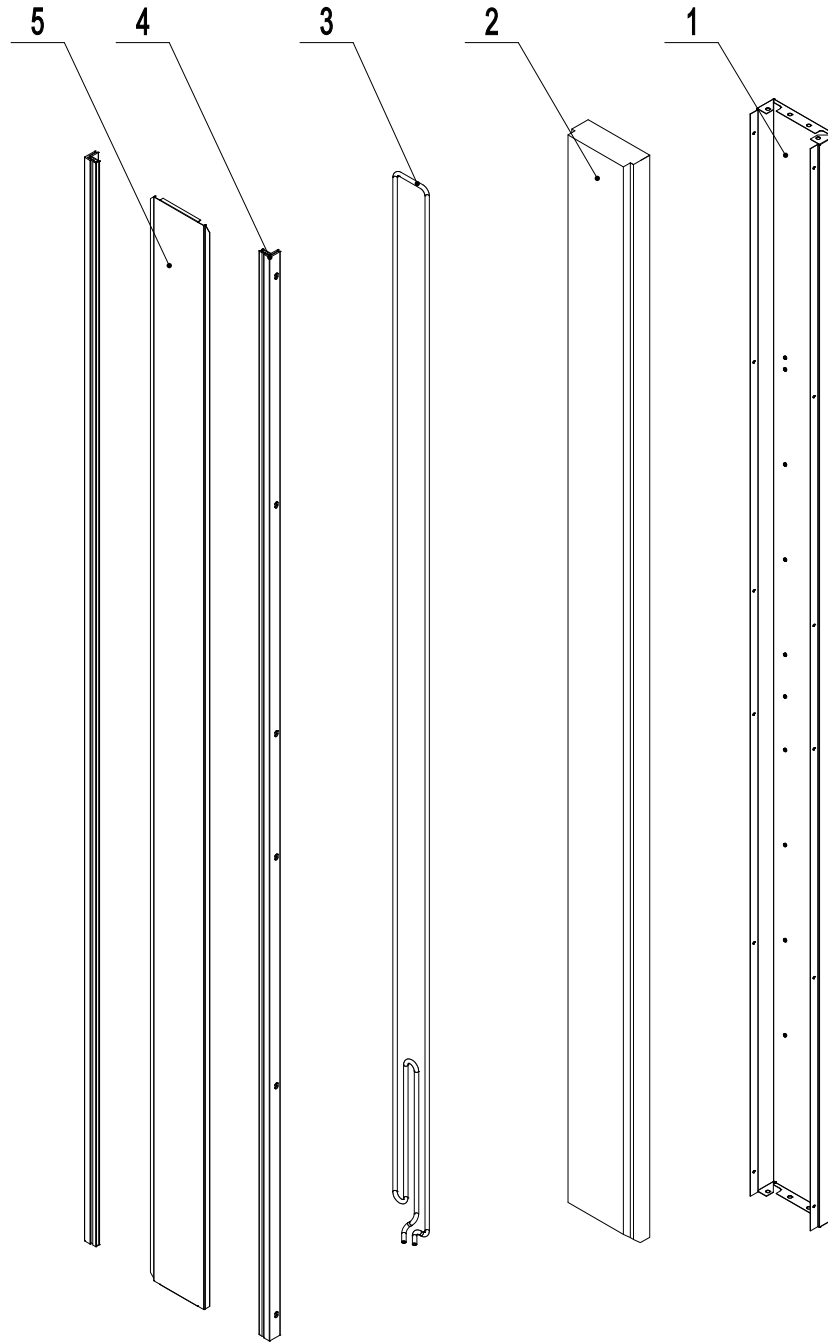
2020. 7. 29



20	W0409080	Evap Fan Motor Cover	ABS	2	
19	8602120203	Evap Front Cover	SUS430	1	
18	W0301078	Evap Fan Blade	ABS/ø172	2	
17	W0301912	Evap Fan Motor		2	
16	80021501	Evap Fan Bracket	SUS304	2	
15	W0302317	Evap Temp Probe		1	
14	W0302316	Room Temp Probe		1	
13	8114120101	Drain Pan Cover	SUS430	1	
12	W0803012	Drain Pan Foam	EPS	1	
11	W0409858	Drain Hose Connector A	PA66	1	
10	W0310078	Drain Pan Heater		1	
9	80022003	Drain Pan	AL	1	
8	W0409859	Drain Hose Connector B	PA66	1	
7	W0310068	Drain Hose Heater		1	
6	80021207	Evap Right Cover	SUS430	1	
5	80021204	Right Air Lane Cover	SUS430	1	
4	80021205	Middle Air Lane Cover	SUS430	1	
3	80021203	Left Air Lane Cover	SUS430	1	
2	80021206	Evap Left Cover	SUS430	1	
1	W0202135	Evaporator	AL TP2-M	1	
序号	Material code	English Name	MATERIAL	QUANTITY	Remark

8703ES-MA

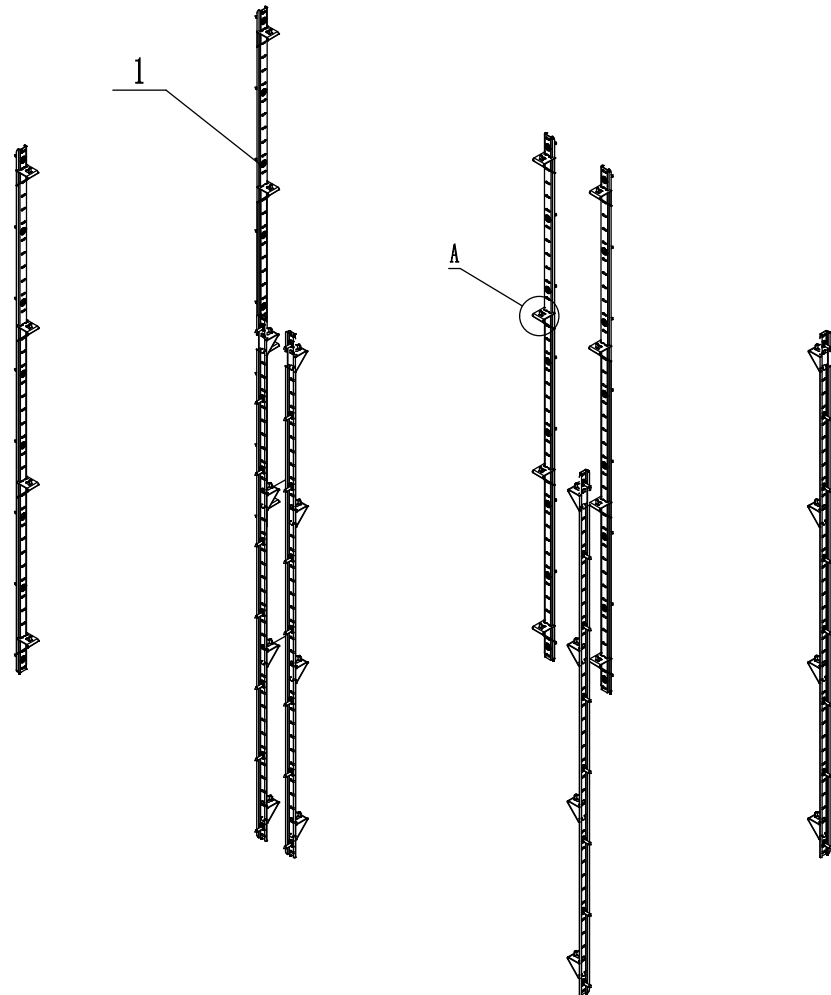
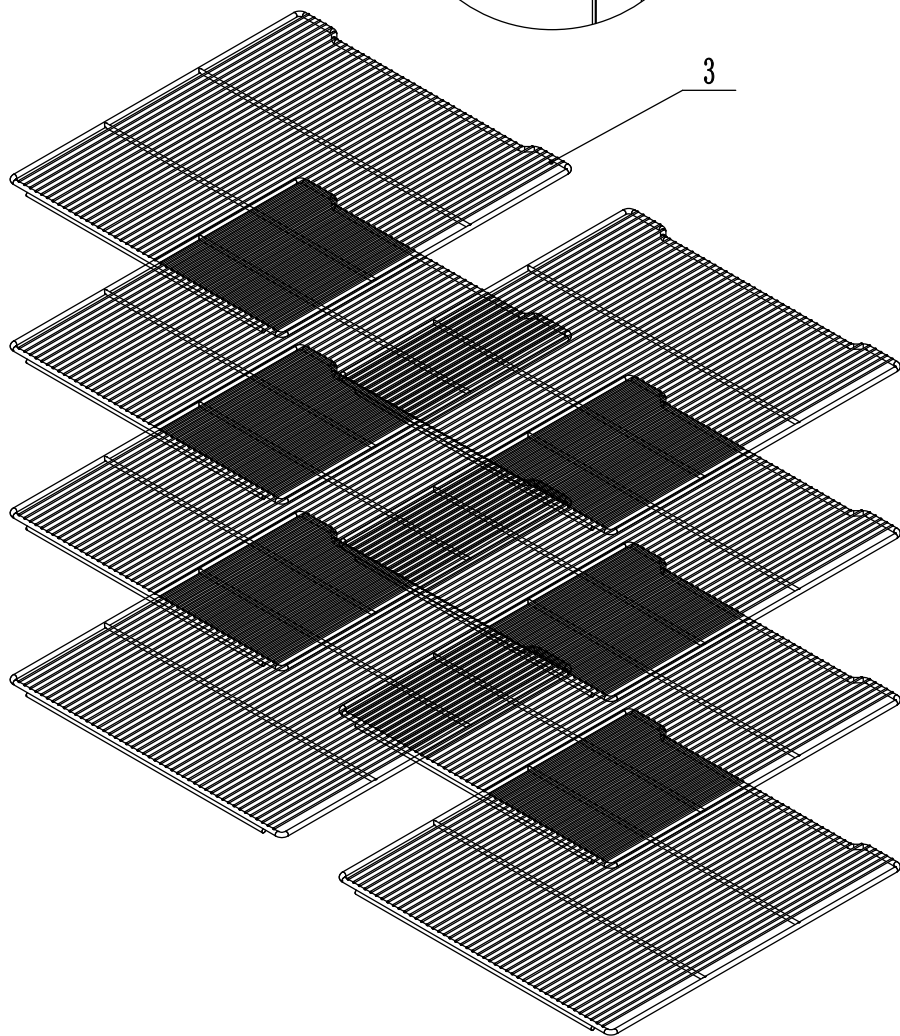
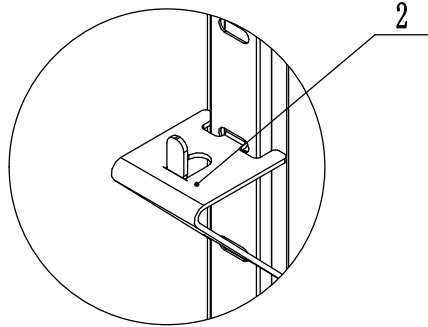
2021.6



5	85041111	Mullion Front Cover		1	
4	W0410976	Mullion Plastic Connector		2	
3	W0210968	Mullion Heater Pipe		1	
2	W0499086	Mullion Foam		1	
1	85041110-430	Mullion Back Cover	SUS430	1	
序号	Material code	English Name	MATERIAL	QUANTITY	Remark

8703GR-SA

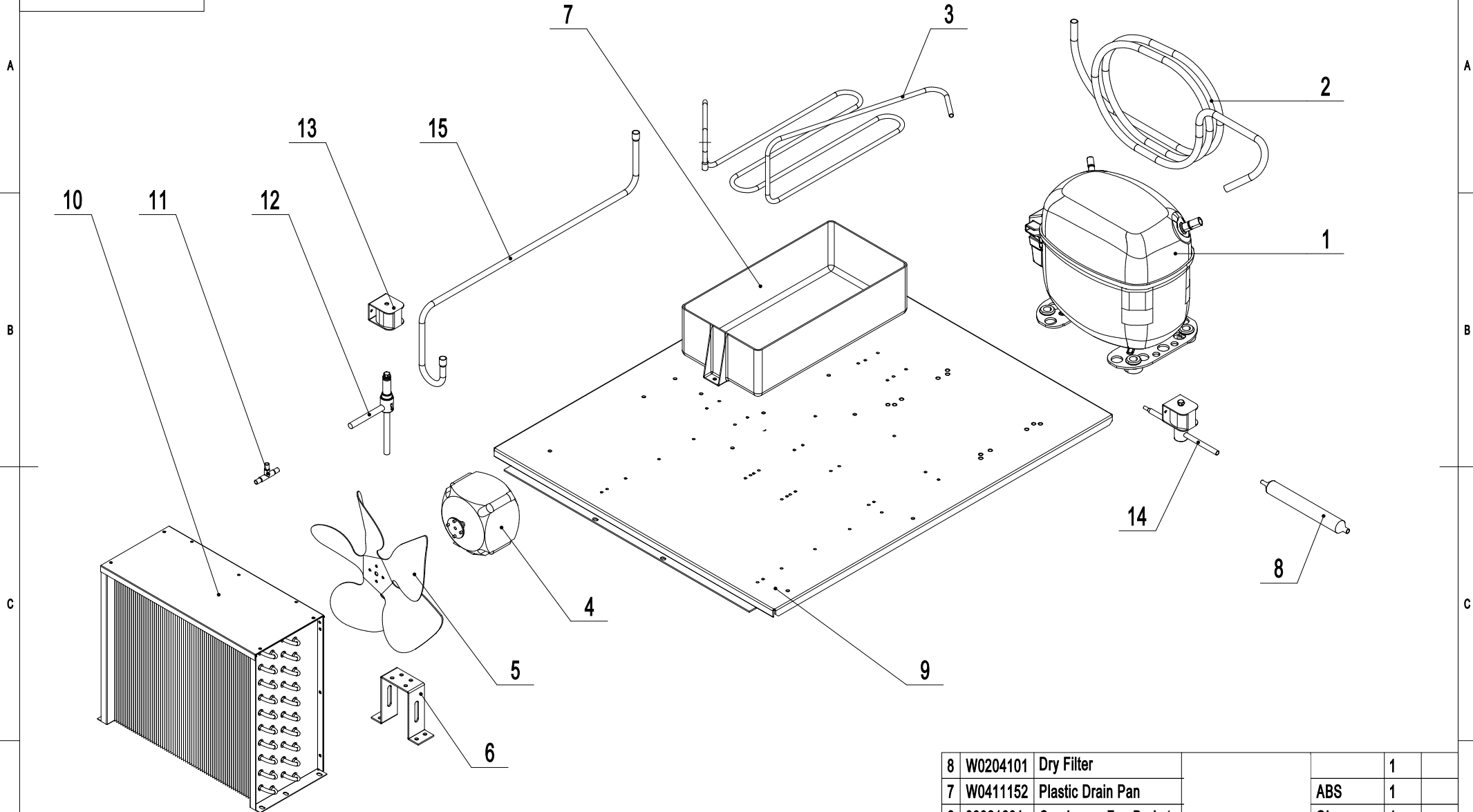
2020. 6. 29



3	W0402395	Shelf		8	
2	66490313	Shelf Support Clip		SUS430	32
1	80037410	Pilaster For Shelf		SUS430	8
序号	Material code	English Name	MATERIAL	QUANTITY	Remark

8703ES-CCA

2020. 9. 25



15	W0210972	Connecting Coil from Valve
14	W0205031	Solenoid valve body(Normally open)
13	W0205025	Solenoid valve coil
12	W0205026	Solenoid valve body(Normally closed)
11	W0208017	'T' Three way connecting pipe
10	W0203101	Condenser
9	85030501	Compressor Board

	1	
FDF2AK18	1	
	2	
FDF6A	1	
TP2-M	1	
GI TP2-M	1	
GI	1	

8	W0204101	Dry Filter		1	
7	W0411152	Plastic Drain Pan		ABS	1
6	80061601	Condenser Fan Braket		GI	1
5	W0301061	Condenser Fan Blade		AL/Ø230	1
4	W0301033	Condensor Fan			1
3	W02100004	High Presure Coil		TP2-M	1
2	W02100005	Low Pressore Coil Back to Comp		TP2-M	1
1	W0201835	Compressor			1
	序号	Material code	English Name	MATERIAL	QUANTITY
					Remark