

MCF8709GR

A

B

C

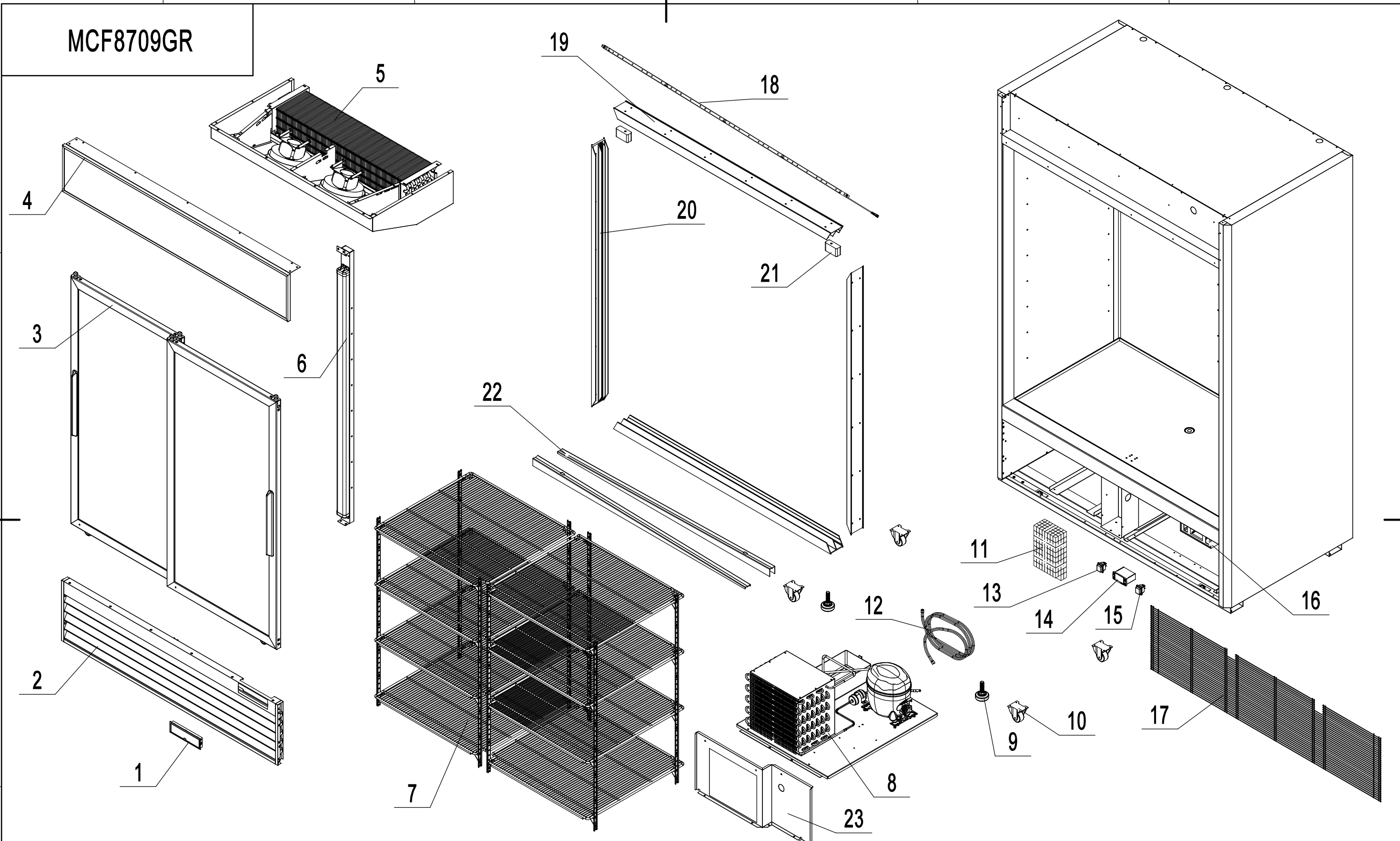
D

A

B

C

D



23	857091901	Wind deflector unit	GI	1	15	W0308019	Power Switch	(GREEN)	1		7	87090413	Shelf Assembly		1		
22	87091501	Door Track		2	14	W0302163	Digital Controller	(BLUE)	1	115V	6	87090456	Mullion Assembly		1		
21	W0413054	Protector Frame		2	13	W0308018	Light Switch	(RED)	1		5	87090455	Evaporator Assembly		1		
20	W0410785	Left-Right Frame		2	12	W0210539	Low Presure Coil Back to Comp		1		4	87090454	Top Panel Assembly		1		
19	W0410784	Top-Bottom Frame		2	11	W0399112	LED Power	36W	1		3	87090410	Door Assembly		1		
18	W0304081	LED Light		1	10	B0604401	2" Castor Without Brake		4		2	87090405	Bottom Panel Assembly		1		
17	W0402634	Back Bottom Barriar		1	9	B0604417	Leg		2		1	W0409882	Controller Cover		1		
16	W0409883	Controller Braket	ABS	1	8	87090450	Comp&Cond Assembly		1		序号	Material code	English Name		MATERIAL	QUANTITY	Remark

1

2

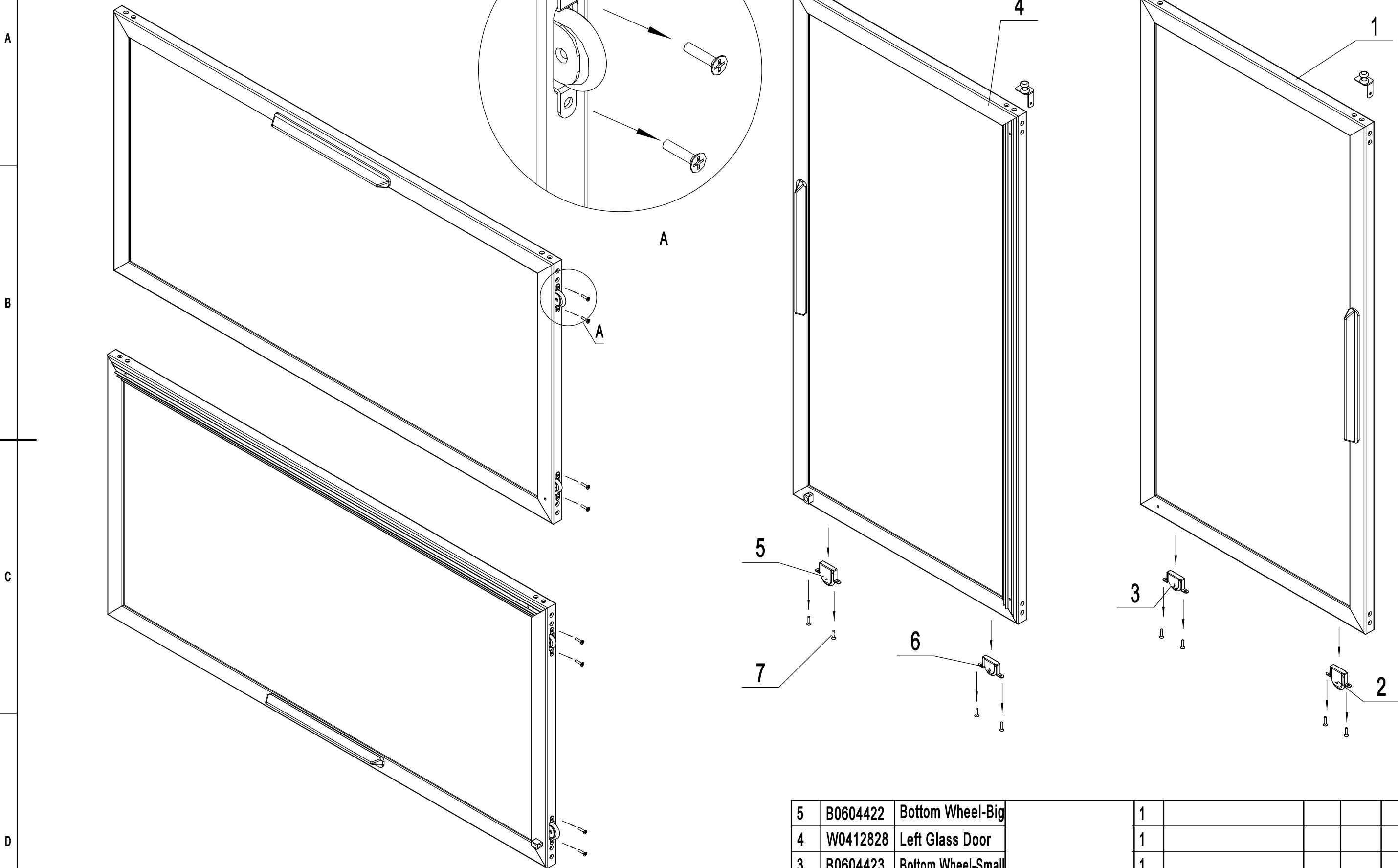
3

4

5

6

87090410



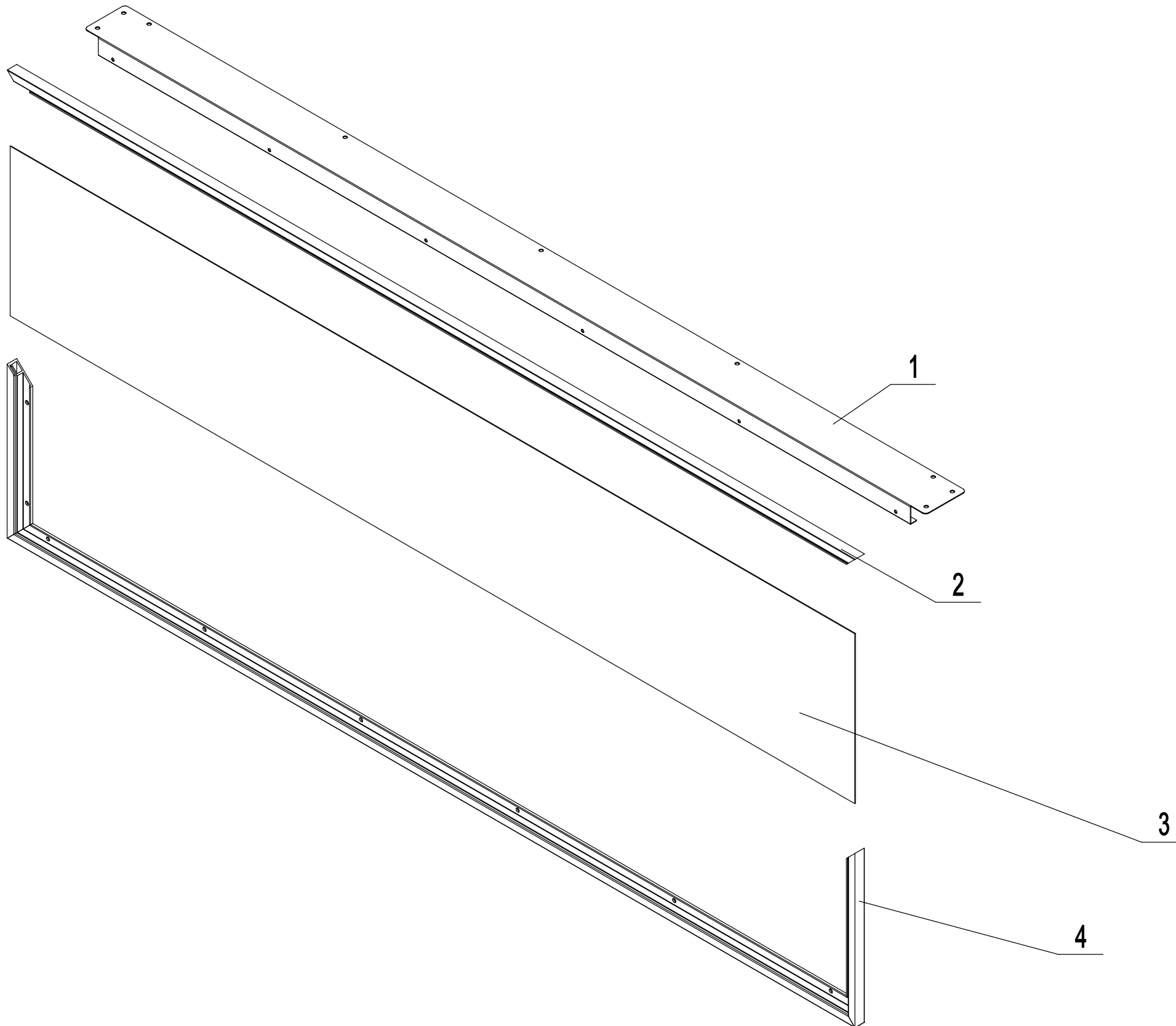
8	B0604424	Top Wheel
7	B0502105	SS Screw M4x16
6	B0604423	Bottom Wheel-Small

4				
8	M4x16			
1				

5	B0604422	Bottom Wheel-Big
4	W0412828	Left Glass Door
3	B0604423	Bottom Wheel-Small
2	B0604422	Bottom Wheel-Big
1	W0412827	Right Glass Door
序号	Material Code	English Name

1				
1				
1				
1				
1				
Quantity	Material	单件重量	总计重量	Remark

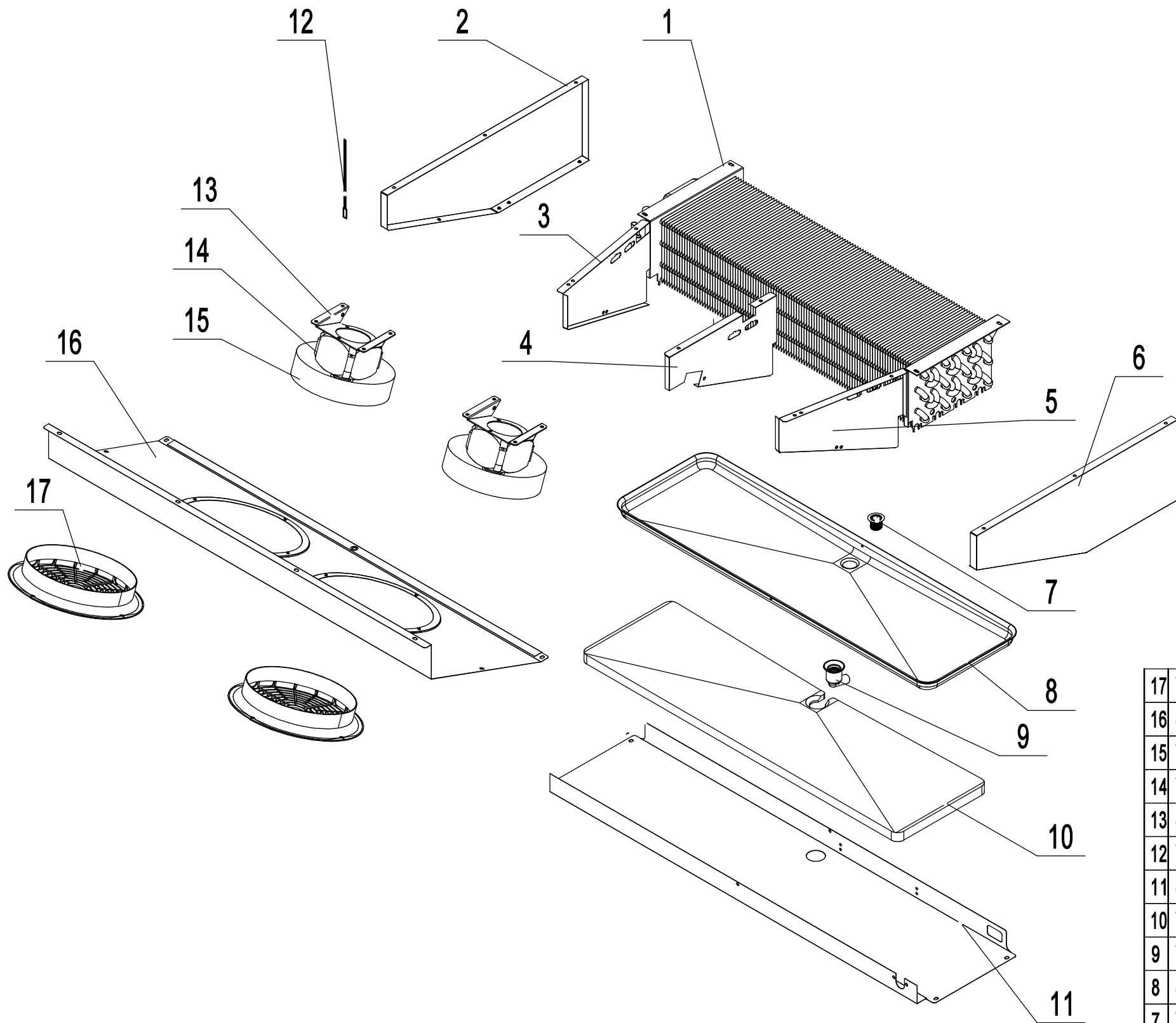
87090454



4	W0410786	Top Panel Frame
3	W0410793	Top Panel
2	W0410787	Top Panel Rack
1	87091804	Top Fixing Rack
序号	Material code	English Name

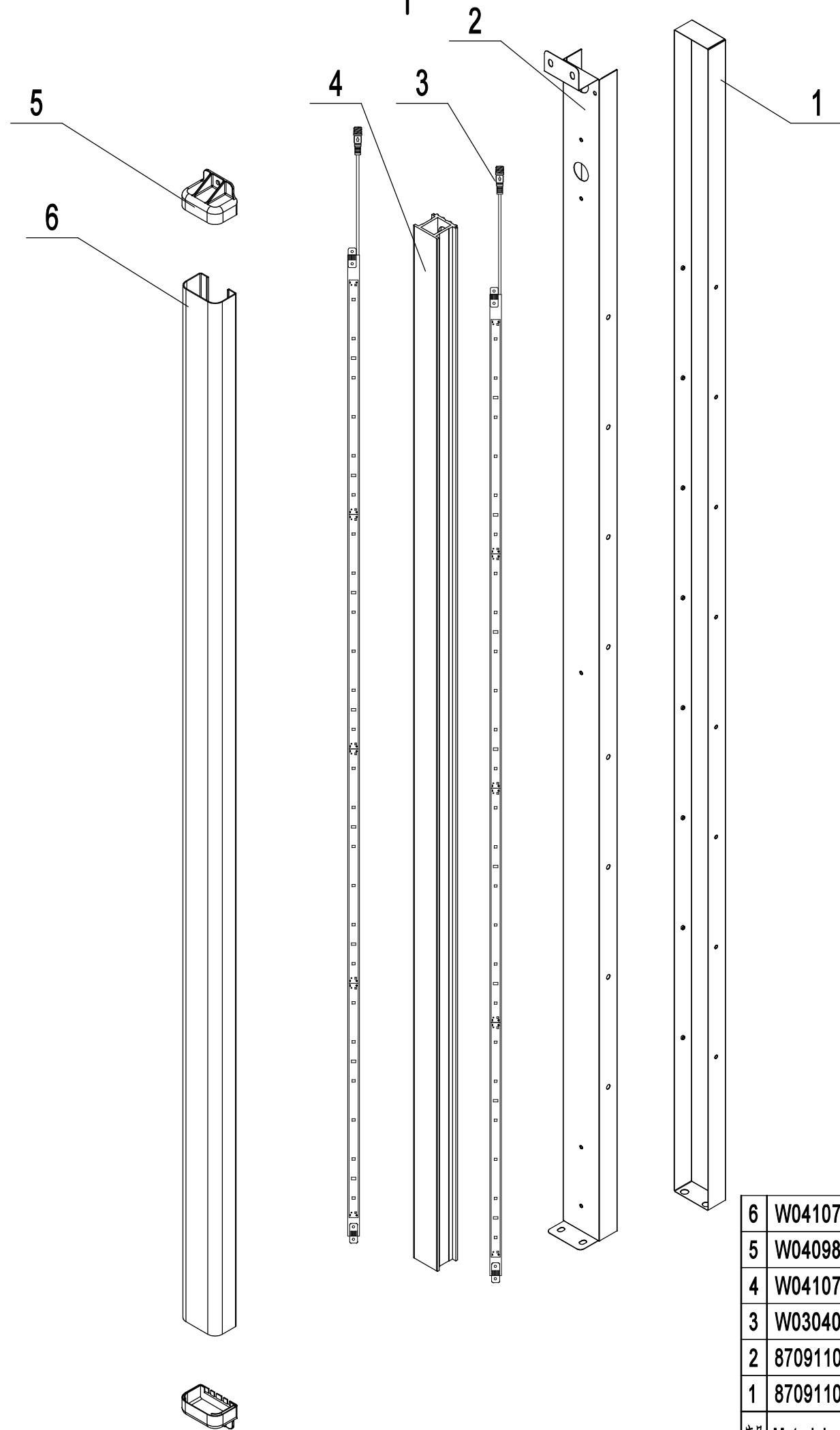
	1	
	1	
PVC	1	
GI	1	
MATERIAL	QUANTITY	Remark

87090455



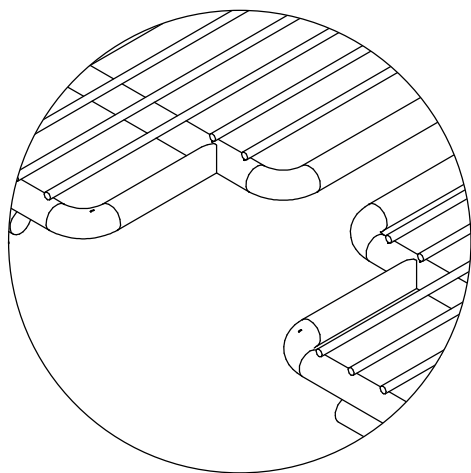
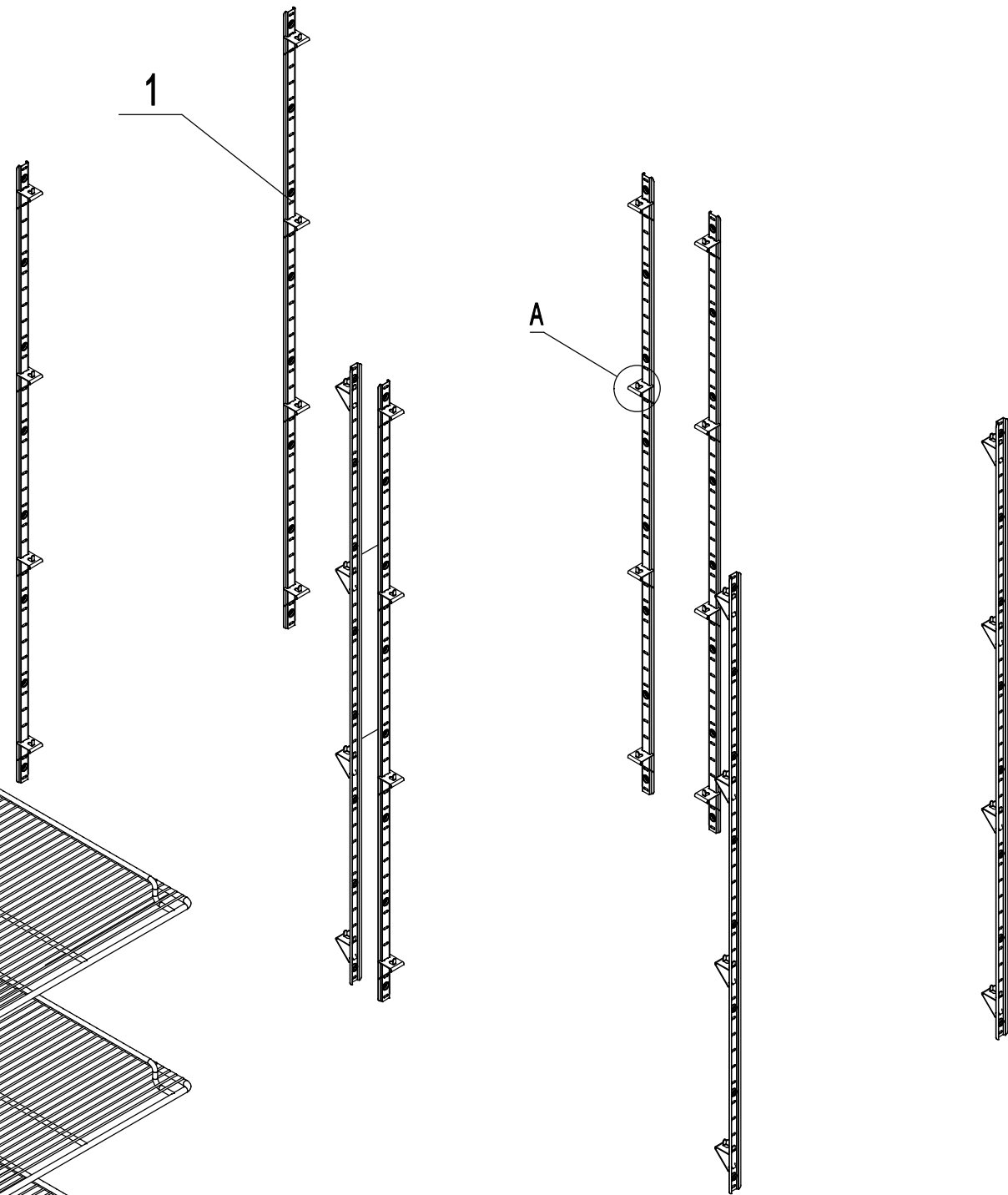
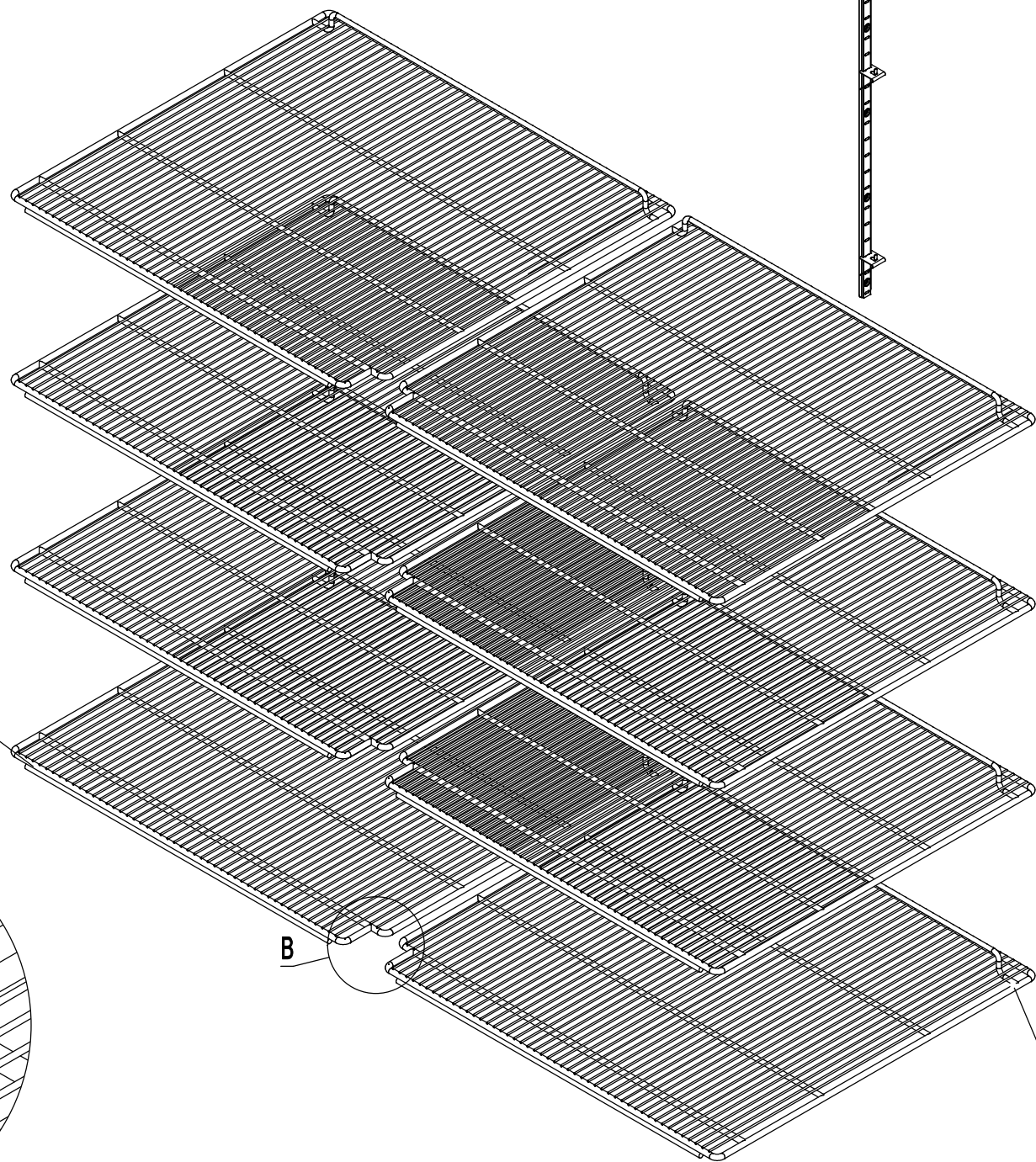
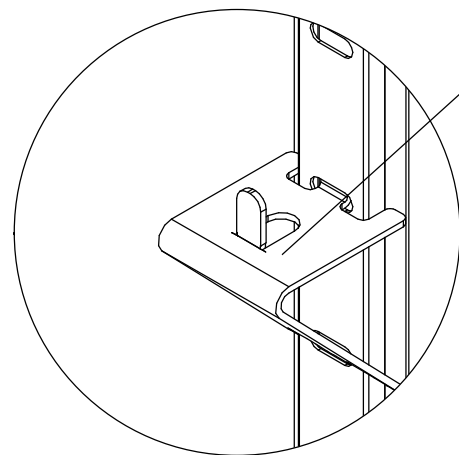
17	W0409080	Evap Fan Motor Cover	ABS	2	
16	8602120203	Evap Front Cover	SUS430	1	
15	W0301059	Evap Fan Blade	AL/Ø172	2	
14	W0301904	Eavp Fan Motor		2	
13	80021501	Evap Fan Braket	SUS304	2	
12	W0302304	Room Temp Probe		1	
11	80021201	Drain Pan Cover	SUS430	1	
10	W0803012	Drain Pan Foam	EPS	1	
9	W0409858	Drain Hose Connector A	PA66	1	
8	80022003	Drain Pan	AL	1	
7	W0409859	Drain Hose Connector B	PA66	1	
6	80021207	Evap Right Cover	SUS430	1	
5	80021204	Right Air Lane Cover	SUS430	1	
4	80021205	Middle Air Lane Cover	SUS430	1	
3	80021203	Left Air Lane Cover	SUS430	1	
2	80021206	Evap Left Cover	SUS430	1	
1	W0202118	Evaperator	AL TP2-M	1	
序号	Material code	English Name	MATERIAL	QUANTITY	Remark

87090456



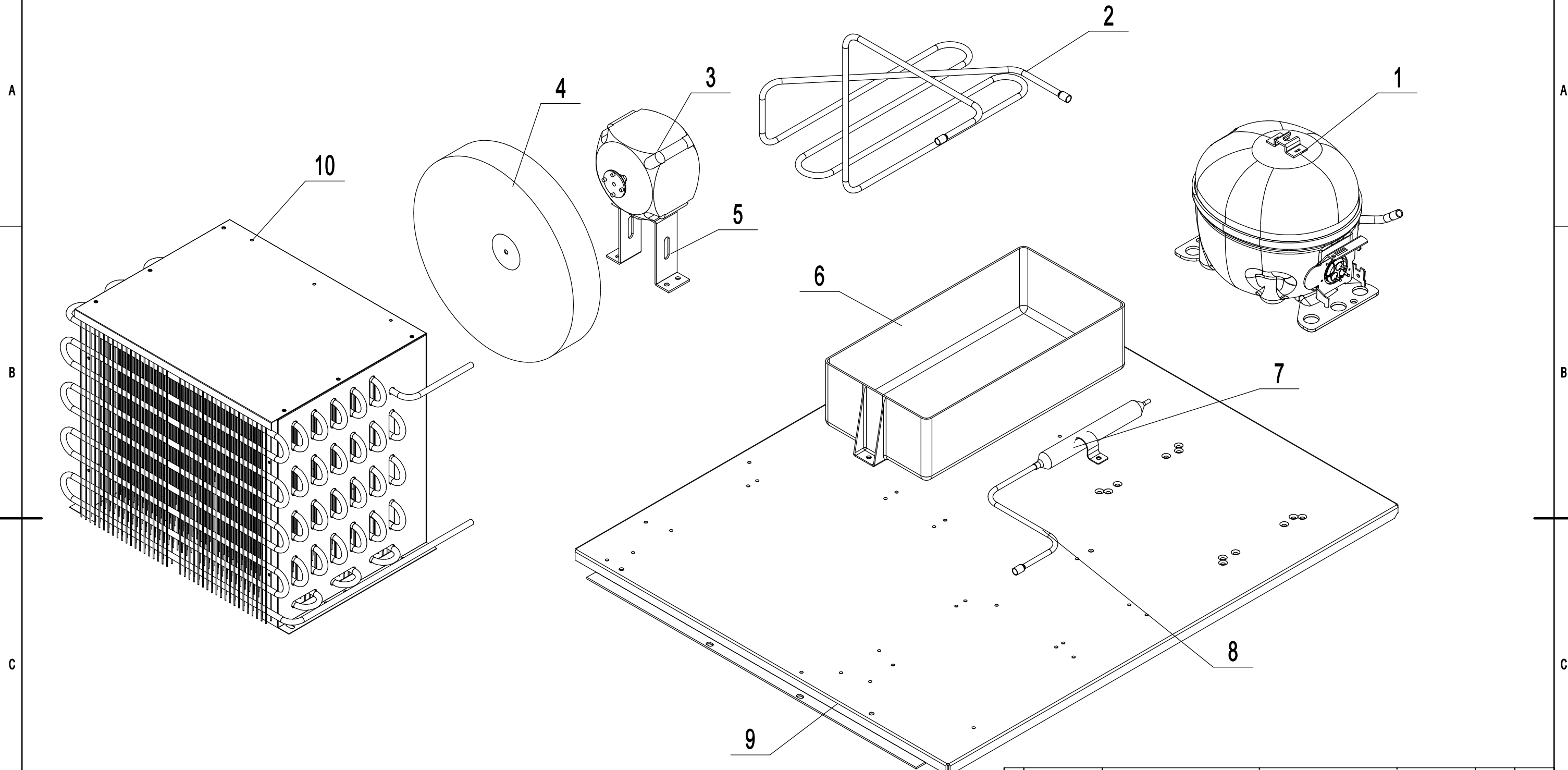
6	W0410792	Light Cover	PC	1	
5	W0409880	Light Frame Clip	ABS	2	
4	W0410791	Light Frame	PVC-H	1	
3	W0304081	LED Light		2	
2	8709110601	Mullion back Cover	SUS430	1	
1	8709110701	Mullion Front Cover	SUS430	1	
序号	Material code	English Name	MATERIAL	QUANTITY	Remark

87090451



4	W0402328	Shelf-Right		4	
3	W0402327	Shelf-Left		4	
2	66490313	Shelf Clip	SUS430	24	
1	80037410	Pilastor For Shelf	SUS430	8	
序号	Material code	English Name	MATERIAL	QUANTITY	Remark

87090450



10	W0203076	Condenser	GI	1	
9	85031803	Compressor Board	GI	1	
8	W0210627	Connecting Coil to Condenser	TP2-M	1	
7	W0204101	Dry Filter		1	
6	W0411152	Plastic Drain Pan	ABS	1	
5	800631601	Condenser Fan Braket	GI	1	
4	W0301061	Condenser Fan Blade	AL/Ø230	1	
3	W0301905	Condenser Fan		1	
2	W0210626	High Presure Coil	TP2-M	1	
1	W0201165	Compressor	(EM2X3125U)	1	
序号	Material code	English Name	MATERIAL	QUANTITY	Remark