

ATA

MUST SEES

NAFEM 2025

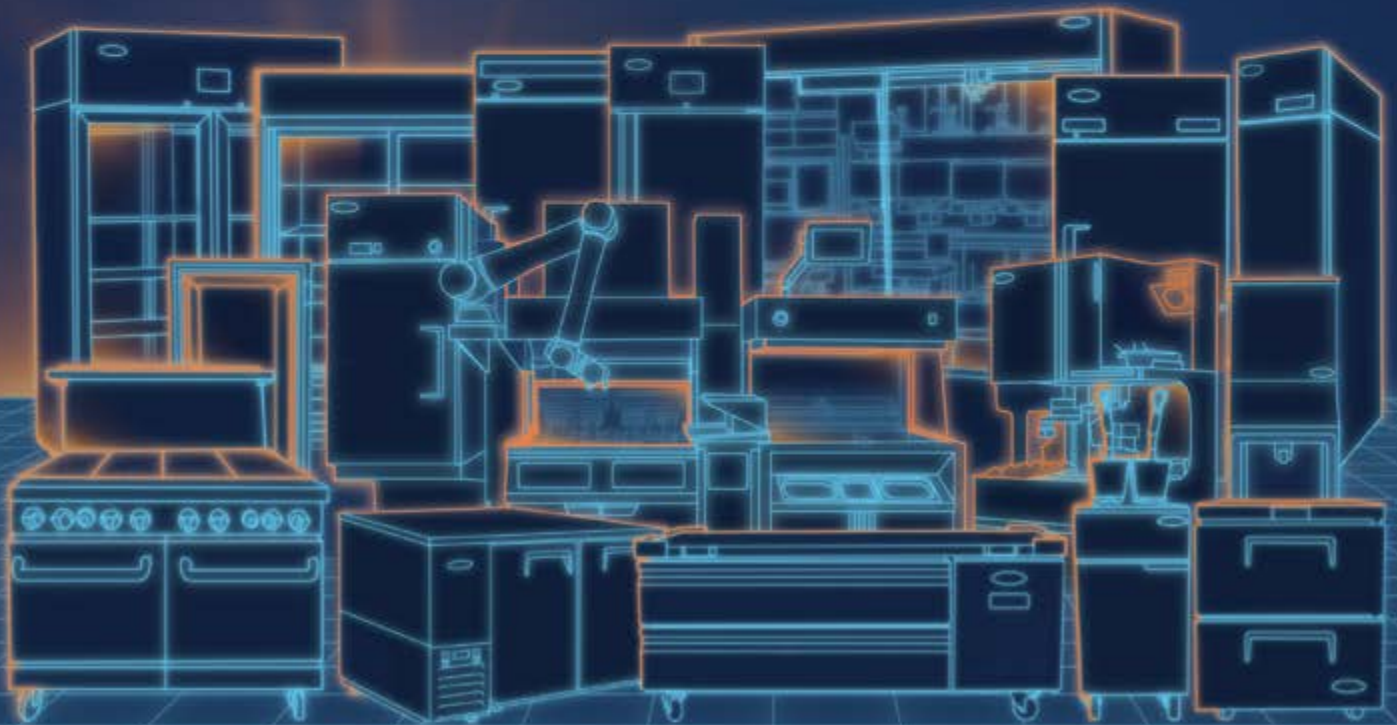




TABLE OF CONTENTS

02	ABOUT ATOSA	13	SECTION 8 PRODUCTS
03	PRODUCT LIST	14	SECTION 9 & 10 PRODUCTS
04	BOOTH MAP	15	SECTION 11 PRODUCTS
05	SECTION 1 PRODUCTS	17	ROBOTIC ARMS & AUTO SAUCING SOLUTION
06	SECTION 2 PRODUCTS	18	EXTENDED WARRANTIES
07	SECTION 3 PRODUCTS	19	COMBI OVENS
09	SECTION 4 PRODUCTS	20	WALK-IN COOLERS AND FREEZERS
10	SECTION 5 PRODUCTS	21	ATOSA CONTACT INFO UNITED STATES OF AMERICA
11	SECTION 6 PRODUCTS	22	INTERNATIONAL DISTRIBUTORS
12	SECTION 7 PRODUCTS		

Atosa is a trusted leader in the commercial foodservice industry, delivering innovative, reliable, and efficient equipment tailored to meet the needs of professionals worldwide. Designed for excellence and built to last, Atosa products empower businesses to streamline operations and achieve success in a competitive market.

ABOUT ATOSA

Atosa is a global leader in commercial foodservice equipment, recognized for its commitment to quality, innovation, and exceptional customer service. Offering a diverse product line that includes refrigeration, cooking equipment, and advanced kitchen automation, Atosa delivers reliable, efficient, and durable solutions to meet the needs of modern foodservice operations.

With a focus on cutting-edge technology and sustainability, Atosa continues to set industry standards, empowering restaurants, hotels, and institutions worldwide. Backed by a global network and a dedication to excellence, Atosa remains at the forefront of shaping the future of commercial foodservice.

WHY ATOSA?

Atosa stands out as a premier choice in the commercial foodservice equipment industry, offering:

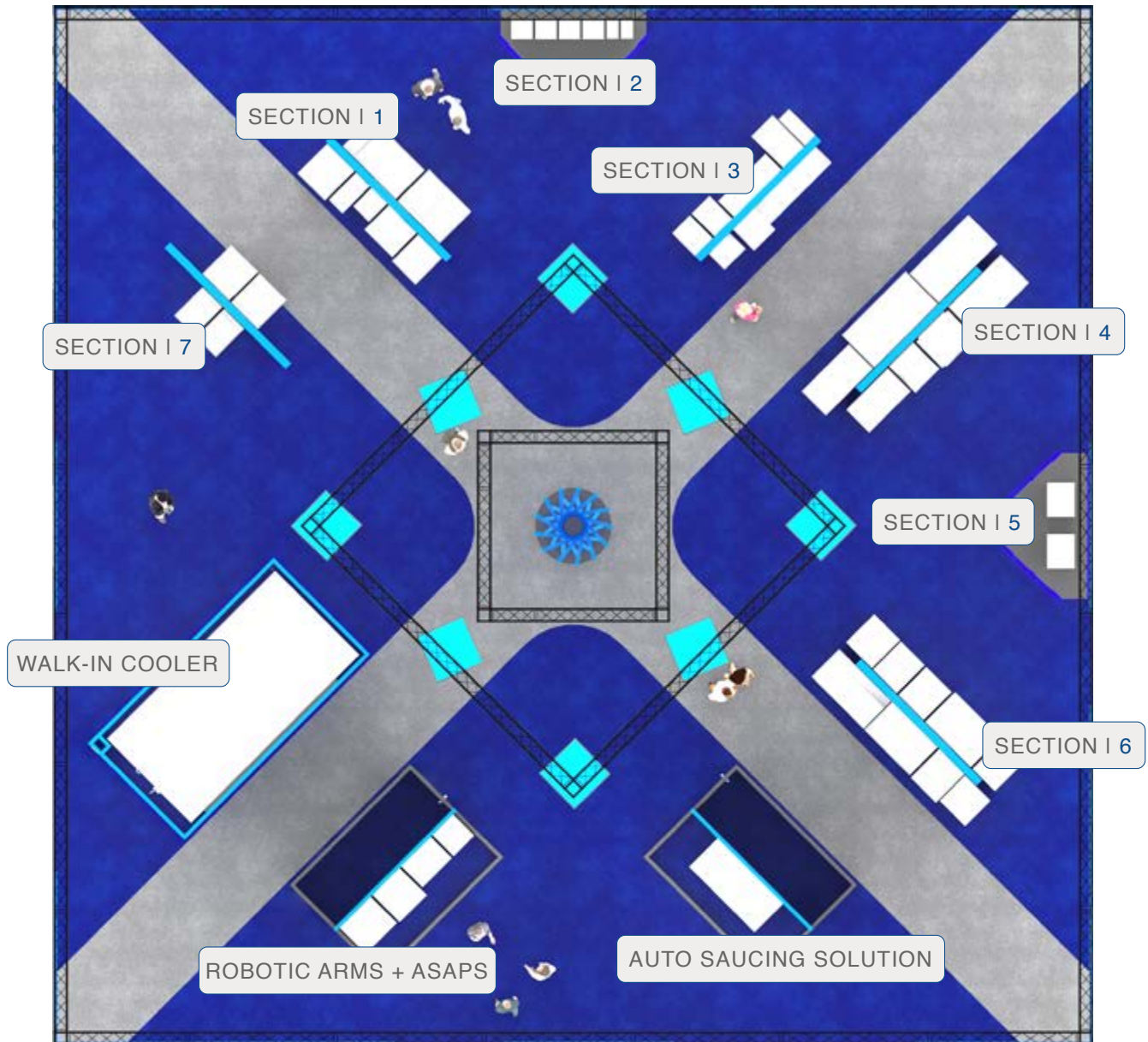
- **A Diverse Product Line:** A wide range of premium-quality equipment to meet the varied needs of foodservice professionals, all at a competitive price point.
- **Nationwide Accessibility:** With 13 distribution facilities and over \$90 million in inventory throughout North America, Atosa ensures product availability and timely delivery.
- **Comprehensive Service Options:** Flexible programs for delivery, installation, removal, and preventative maintenance, tailored to fit your business needs.
- **Exceptional Customer Support:** Dedicated service before and after the sale, ensuring a seamless experience.
- **Extended Warranty Coverage:** Options for up to 5 years of parts and labor, providing peace of mind and long-term value.

DID YOU KNOW?

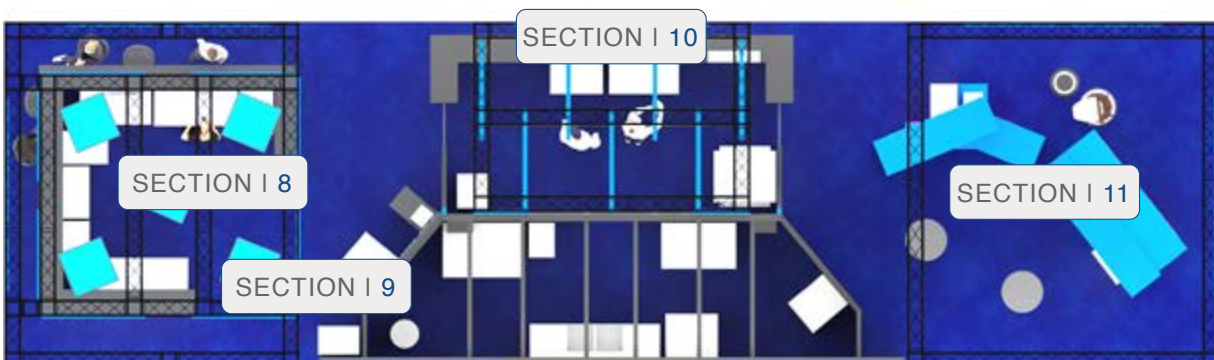
- Atosa collaborates with over 6,300 third-party service providers and employs more than 40 in-house service technicians across the U.S.
- Atosa's manufacturing facilities span an impressive 13 million square feet.
- Products are shipped in durable packaging with breakaway skids to ensure safe and easy handling.
- All Atosa refrigeration units come with castors pre-installed for immediate use.
- Over 95% of Atosa's sales come from repeat customers, a testament to customer satisfaction and product reliability.
- Atosa is a leader in kitchen automation, continuously innovating and creating cutting-edge solutions for the foodservice industry.
- Atosa proudly supports and exclusively sells through brick-and-mortar foodservice equipment dealers.

SECTION 1	MODEL NO.	DESCRIPTION
	AEFF-50-2BT	Electric Fryer Batteries with Built-In Filtration
	AGFF-50-1	Gas Fryer, Single Vat, with Filtration
	ATW-13	Wok Range
	AT7G8P-F	Double Vat Pasta Cooker
	MGF8420	27" Undercounter Freezer with Drawers
	ACEF-32	Countertop Electric Fryer
	MGF8462GR	60" Freezer Chef Base
	ACHP-2	12" Two (2) Burner Hot Plate
	ATTG-48	48" Thermostatic Griddle
	SE3648ECR2	Stainless Steel Equipment Stand
	ATMG-24	24" Manual Griddle
	ATRC-24	24" Radiant Broiler
SECTION 2	ATH11PTAUS1C	Modular Hot Food Holding Cabinet
	ATH11SSAUS1C	Modular Hot Food Holding Cabinet
	ATH22PTAUS1C	Modular Hot Food Holding Cabinet
	ATH22SSAUS1C	Modular Hot Food Holding Cabinet
	ATH32PTAUS1C	Modular Hot Food Holding Cabinet
	ATH32SSAUS1C	Modular Hot Food Holding Cabinet
SECTION 3	SPA10K1826	10 Pan Sheet Rack
	SPA20W1826	20 Pan Sheet Rack
	SS1818D21R18	One Compartment Sink
	ST2436ECB4	Work Table with 4" Backsplash
	SDR2420152	Optional Drawers
	SH12SD	12" Hand Sink
	ST3012ECB4	Work Table with 4" Backsplash
	ST1824ECR2	Work Table with 2" Backsplash
	SH17MKV	17" Hand Sink with Knee Pedal
	SWM2424	Wall Mount Microwave Shelf
	SWS1848	Wall Shelves
	SWS1536P	Wall Shelves with Pot Racks
	SWS1860	Single Tier Overshelf
SECTION 4	ESL3814GR	Salad Prep. Table with Display Top
	MSF8308GR-NTCV	72" Refrigerated Mega Top Sandwich Prep. Table
	MPF8202GR	67" Refrigerated Pizza Prep. Table
	WDG126D	Floor Model Curved Refrigerated Display Cases
	AUF-27GD	27" Glass Door Undercounter Freezer
	7800	Food Warmer
	AUF36SD	36" Undercounter Freezer
	EBF-03GR	3 Pan Blast Chiller/Freezer
SEC 5	MSF8330	60" Dual Sided Sandwich Prep. Table
	CHDC-44	Countertop Heated Display Case - Curved
SECTION 6	CRDC-35	Countertop Refrigerated Display Case - Curved
	ACWF-2H	Freezer Product Dispenser with Hopper
	MBF8020GR	One Section Dual Temp, Top Half Door Refrigerator, Bottom Drawers Freezer
	MBF8129GR	2 Section Dual Temp Refrigerator/Freezer
	EPF3495GR	Marble Top Pizza Prep. Table
	ESL3883GR	Countertop Refrigerated Prep. Station

SECTION 6	MODEL NO.	DESCRIPTION
	EBF-05GR	5 Pan Blast Chiller/Freezer
	MBF8501GR	Reversible Door, and IOT Controller
	MBF8001GR	Reversible Door, and IOT Controller
	MCF8622GR	Pass Thru Freezer, Black Exterior & Interior, IOT Controller
ROBOTICS + AUTO SAUCING	MBF8532GR	One (1) Door Reach-in Freezer
	WSM-10	Auto Saucing Solution
	FRY DISPENSER	French Fry Freezer with Hopper & Dispenser
	ROBOTIC ARM	6-Axis Co-bot with a 51"+ Reach Range
	HOOD ASSEMBLY	Ventless Hood Assembly with Ansul Fire Suppression System
	FRYER	Double 50 lb Fryer with Electronic Controls & Built-in Filtration System
	ASAP-2	Auto Seasoning & Auto Packaging Solution
WALK-IN	AWF&C8888-TF	Combination Walk-in Cooler & Freezer
	MWSSE243674	4-Shelf Epoxy Shelving Kits w/ 74" Posts (24"x36")-Slate Gray
	MWSSE244874	4-Shelf Epoxy Shelving Kits w/ 74" Posts (24"x48")-Slate Gray
	SDA244612	Aluminum Dunnage Rack
SECTION 7	BYR0300	22" New Ice Bin, 300 lb
	YRS450A	22" New Ice Machine, 450 lb
	YRS600A	22" New Ice Machine, 600 lb
	BYR0400	30" New Ice Bin, 400 lb
	YRM800A	30" New Ice Machine, 800 lb
SECTION 8	YRM1000A	30" New Ice Machine, 1000 lb
	SBB69SGGR-AUS2	69" Back Bar Cooler w/ Sliding Glass Doors Shallow Depth (Black Exterior)
	SB124R	Bar Sink
	SI182412	Ice Bin
	MBB23GR	23" Back Bar Cooler
	MBGF48GR	48" Glass Froster
	SRS422	Single Speed Rail
	MKC58GR	58" Direct Draw Keg Cooler
SECTION 9	MKCD23GR	Beverage Quick Chiller on MKC23GR
	YBF9272	Refrigerated Locker
	YBF9271	Pizza Locker
SECTION 10	QSPRO-9	High Speed Cooking Oven
	MPRA-20	Heavy Duty Bun Pan Rack
	MGF36RGR	36" Undercounter Refrigerator
	MSF8302GR	48" Refrigerated Sandwich Prep. Table
	WLS-62L	Sushi Display Case
	AEC-0621E	Electric Smart-Touch Combi Oven
	AEC-21	Combi Condensation Hood
	AEP0521	Combi Proofer Stand
SECTION 11	BLENDRPRO ELITE	Floor Model Milkshake Machine
	POLARPRO EDGE	Countertop Single Flavor Gravity-Feed Ice Cream Machine
	COFFEE SERVER	Coffee Server
	TEA DISPENSER	Tea Dispenser
	DUALFUSION X	Coffee & Tea Combination Brewer
	YR140-AP-161	142 lb Undercounter Ice Machine



BOOTH # 638



BOOTH # 538



AEFF-50-2BT

31" W x 33.75" D x 48.5" H

New Electric Fryer Batteries With Built-In Filtration

- Single, Double & Triple Batteries
- Fully Programmable Electronic Controls
- Stainless Steel Tank
- Two (2) Fryer Baskets Per Tank
- Built-In Filtration System With Pump
- Optional Fryer Mesh Screen, Vessel Covers & Side Splash
- Pre-Installed Casters
- Up To 5-Year Extended Warranty Available



AGFF-50-1

15.5" W x 31" D x 45.35" H

New Gas Fryer Batteries With Built-In Filtration

- Single, Double & Triple Batteries
- Fully Programmable Electronic Controls
- Stainless Steel Tank
- Two (2) Fryer Baskets Per Tank
- Built-In Filtration System With Pump
- Optional Fryer Mesh Screen, Vessel Covers & Side Splash
- Pre-Installed Casters
- Up To 5-Year Extended Warranty Available



ATW-13

18" W x 20.75" D x 40" H

New Wok Ranges

- Stainless Steel Construction
- Heavy-Duty Cast Iron Burner & Grates
- 110,000 BTU
- Adjustable Valve
- 13" & 16" Wok Ring Available
- Adjustable Legs



AT7G8P-F

31.5" W x 27.575" D x 42.75" H

New Pasta Cookers

- Stainless Steel Exterior/Interior
- Single & Double Tank Models
- Two Baskets Standard Per Tank



MGF8420GR

27" W x 30" D x 36.5" H

Undercounter Freezer With Drawers

- Stainless Steel Exterior/Interior
- Full Electronic Controller
- Two (2) Drawers With 6" Deep Metal Pans
- Magnetic Drawer Gaskets
- Pre-Installed Casters
- Up To 5-Year Extended Warranty Available



ACEF-32

21.7" W x 18.5" D x 17.2" H

Countertop Electric Fryers

- 10, 16 & 32 lb Models
- Stainless Steel Construction
- Nickel-Plated Fry Baskets With Cool-To-Touch Handles
- Built-In Basket Hanger(s)
- 70°F – 375°F

**MGF8462GR**

60.5" W x 33" D x 26.6" H

New Freezer Chef Bases

- Stainless Steel Exterior/Interior
- Full Electronic Controller
- Heavy-Duty Stainless Steel Drawer Slides & Rollers
- Drawers Include 6" Deep Metal Pans
- Flat Top With Corner Guards
- Magnetic Drawer Gaskets
- Pre-Installed Casters
- Up To 5-Year Extended Warranty Available

**ACHP-2**

12" W x 27.6" D x 13.1" H

Countertop Hot Plates

- 2, 4 & 6 Burner Models
- Stainless Steel Exterior/Interior
- Stainless Steel Full Width Crumb Tray
- 32,000 BTU Burners
- Heavy-Duty Cast Iron Grates
- Independent Manual Controls Per Burner
- Stainless Steel Legs
- Up To 5-Year Extended Warranty Available

**ATTG-48**

48" W x 28.6" D x 15.2" H

Countertop Thermostatic Griddles

- 24", 36" & 48" Models
- Stainless Steel Exterior/Interior
- Stainless Steel Grease Drawer
- 1" Plate
- 25,000 BTU Burners
- Stainless Steel Legs
- Up To 5-Year Extended Warranty Available

**ATMG-24**

24" W x 28.6" D x 15.2" H

**Countertop Manual Griddles**

- 24", 36" & 48" Models
- Stainless Steel Exterior/Interior
- Stainless Steel Grease Drawer
- 3/4" Plate
- 30,000 BTU Burners
- Stainless Steel Legs
- Up To 5-Year Extended Warranty Available

**ATRC-24**

24" W x 27.6" D x 15.2" H

**Countertop Radiant Broilers**

- 24", 36" & 48" Models
- Stainless Steel Exterior/Interior
- 35,000 BTU Burners
- Independent Manual Controls
- Heavy-Duty, Adjustable Cast Iron Grates
- Stainless Steel Legs
- Up To 5-Year Extended Warranty Available

**ATH32PTAUS1C**

17.2" W x 16.8" D x 22.2" H

Modular Hot Food Holding Cabinets

- Stainless Steel Exterior/Interior
- Single Sided & Pass Thru Models
- Independent Adjustable Temperature Per Section
- Temperature Range: 150°F – 260°F
- Solid State Digital Controls
- 1 x 1, 2 x 2, 3 x 2 & 3 x 3 Standard Sizes
- Audible & Visual Alarms





Work Tables

- 18", 24", 30", & 36" Models Available
- 18GA. 430 S/S Flat Top, Undershelf, & Hat Channel
- S/S Legs, Socket, & Bullet Feet
- Available With 2" & 4" Backsplash



Equipment Stands

- 18GA. 430 S/S Table With 2" Backsplash
- 18GA. 430 S/S Undershelf & Hat Channel
- S/S Legs, Socket, & Bullet Feet



Wall Shelves

- 18GA. 430 S/S Shelves & Brackets
- 0.187" x 2" 430 S/S Bars (Shelves With Pot Racks)



Overshelves

- 18GA. S/S Shelves
- S/S Support Pipe
- Easy To Assemble



Pan Racks

- Aluminum Constructions
- Full Size Sheet Pans (18" x 26") Or Half Size Sheet Pans (13" x 18")



Aluminum Dunnage Racks

- Heavy Duty, Welded Dunnage Racks
- 24", 36", 48", & 60" Models Available
- 20" Deep
- 8" & 12" Heights
- 6 Per Box



Speed Rails

- 15", 22", 32", 34", 42", 46", & 58" Lengths Available
- Single & Double Holder Models Available
- 403 S/S & 304 S/S Bottle Shelves



Ice Bins

- S/S Bowls, Top, Back, & Body
- Galvanized Legs & Socket, Plastic Bullet Feet
- 'U' Shape Leg Bracing
- Plastic Bottle Holder Included
- Post-Mix Aluminum Cold Plate With S/S Tubing (Select Models)



Bar Sinks

- Include 3" Backsplash Tub: (10" x 14" x 10")
- 18GA. 304 S/S Top, Bowl & Back
- 20GA. 304 S/S Apron
- Galvanized Legs & Socket
- 1.5" Drain Basket Included



Hand Sinks

- 20GA. 304 S/S Hand Sinks
- 18GA. 304 S/S Wall Mount Clips
- 1.5" Drain Basket Included
- 18GA. 304 S/S Side Splashes (Select Models)



Sinks

- S/S Structure
- 3.5" Drain Basket Included
- Bowl Sizes Include:
 - 10" x 14" x 10"
 - 18" x 18" x 12"
 - 20" x 20" x 12"
 - 18" x 24" x 14"
 - 24" x 24" x 14"
 - 18" x 18" x 12"



Clean, Soiled, & Undercounter Dish Tables

- S/S Structure
- 3.5" Drain Basket Included
- Bowl Sizes Include:
 - 10" x 14" x 10"
 - 18" x 18" x 12"
 - 20" x 20" x 12"
 - 18" x 24" x 14"
 - 24" x 24" x 14"
 - 18" x 18" x 12"



ESL3814GR

53.75" W x 27.575" D x 51.2" H

Salad Prep. Table With Display Top

- Stainless Steel Exterior/Interior
- Full Electronic Controller
- Bottom Mount Refrigeration
- 12 x 20 Metal Pans Included
- Pre-Installed Casters & Shelves
- Up To 5-Year Extended Warranty Available



MSF8308GR-NTCV

72.7" W x 36.8" D x 34" H

Standard & Mega Top Sandwich Prep. Tables

- Stainless Steel Exterior/Interior
- Hood Assembly Or Night Covers
- Stainless Steel Pan Liner
- 1/6 Size, 6" Deep Poly Pans Included
- Full Electronic Controller
- Optional Bun Pan Rack (MPRA-SP)
- Pre-Installed Casters & Shelves
- Optional Sneezeguard And Tray Slides
- Optional Drawer Cartridges
- Up To 5-Year Extended Warranty Available



MPF8202GR

67" W x 33.1" D x 44" H

Pizza Prep. Tables

- Stainless Steel Exterior/Interior
- Pre-Installed 4" D, 1/3 Size Pans
- Stainless Steel Pan Liner
- 19" Cutting Board
- Full Electronic Controller
- Optional Bun Pan Rack (MPRA-7)
- Pre-Installed Casters & Shelves
- Optional Garnish Rack & Crumb Catcher
- Optional Drawer Cartridges
- Pre-Installed Casters & Shelves
- Up To 5-Year Extended Warranty Available



WDG126D

47.25" W x 26" D x 47.25" H

Floor Model Curved Refrigerated Display Cases

- Black Exterior & Stainless Interior
- Full Electronic Controller
- Two (2) Stainless Steel Shelves
- LED Interior Lighting
- Double Pane Tempered Glass With Defog Feature
- 2" Casters Standard
- Two (2) Rear Sliding Doors
- Up To 5-Year Extended Warranty Available



AUF27GR-GD

27.5" W x 30" D x 32.5" H

New Undercounter Refrigerators & Freezers

- Stainless Steel Exterior/Interior
- Solid & Glass Door Models
- Integrated Door Handle(s)
- Field Reversible Door(s)
- Full Electronic Controller
- Pre-Installed Casters & Shelf Clips
- Up To 5-Year Extended Warranty Available



AUF36GR-SD

36.3" W x 30" D x 32.5" H

New Undercounter Refrigerators & Freezers

- Stainless Steel Exterior/Interior
- Solid & Glass Door Models
- Integrated Door Handle(s)
- Field Reversible Door(s)
- Full Electronic Controller
- Pre-Installed Casters & Shelf Clips
- Up To 5-Year Extended Warranty Available

**7800/7700**

24" W x 14.6" D x 9" H

**Countertop Warmer or Cooker/Warmer**

- 7800 Is A Cooker/Warmer And The 7700 Is A Warmer
- Stainless Steel Construction
- Anti-Drip Edges
- Lighted On/Off Switch
- Heats Up Within 10 Minutes
- Adjustable Temperature Setting

**EBF03GR/EBF05GR**

29.75" W x 32.75" D x 22.875" H

New Blast Chillers/Freezers

- Stainless Steel Exterior/Interior
- 3 & 5 Pan Models Available
- Easy To Use Electronic Controller
- Self-Closing Door & Magnetic Gasket
- Core Temperature Probe
- Stainless Steel Tray Slides
- Chiller Reduces Temperature From 200°F To 37°F Within 90 Minutes
- Freezer Reduces Temperature From 200°F To 0°F Within 240 Minutes

**MSF8330GR**

60" W x 60" D x 34" H

New 60" Dual-Sided Sandwich Prep. Table

- Stainless Steel Exterior/Interior
- Holds 40 1/6 Size Pans
- Independent Cold Wall Top Rails
- Forced Air Refrigerated Base With Doors On Both Sides
- Full Electronic Controller
- Pre-Installed Casters & Shelves
- Optional Sneezeguard And Tray Slides
- Optional Drawer(s)
- Up To 5-Year Extended Warranty Available

**CHDC-44**

27.6" W x 22.1" D x 26.4" H

**Countertop Curved/Square Heated Display Cases**

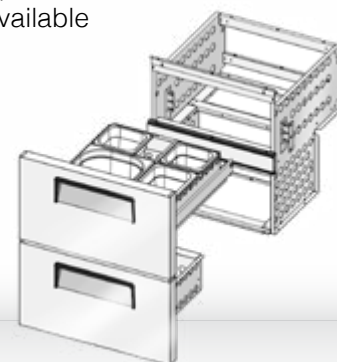
- Stainless Steel Exterior & Interior With Black Frame
- Removable Water Pan
- Full Electronic Controller
- Three (3) Stainless Steel Shelves
- LED Interior Lighting
- Double Pane Tempered Glass With Defog Feature
- Two (2) Rear Sliding Doors
- Up To 5-Year Extended Warranty Available

**CRDC-35**

27.6" W x 22.1" D x 26.4" H

**Countertop Curved/Square Refrigerated Display Cases**

- Stainless Steel Exterior & Interior With Black Frame
- Full Electronic Controller
- Two (2) Stainless Steel Shelves
- LED Interior Lighting
- Double Pane Tempered Glass With Defog Feature
- Two (2) Rear Sliding Doors
- Up To 5-Year Extended Warranty Available

**MULTIPLE****Field Installable Drawer Assembly Kits**

Atosa Field Retrofittable Drawer Cartridges are designed to be easily installed into existing Atosa sandwich prep. tables, worktop and undercounter refrigerators, and pizza prep. tables. They provide enhanced functionality, maximizing storage capacity and offering an efficient and easy-to-access storage solution for ingredients and food products.



ACWF-2H

28.87" W x 28.87" D x 77.25" H

Freezer Product Dispenser with Hoppers

- Stainless Steel Exterior/Interior
- Single, Double & Triple Hopper Models
- Dispenser Can Be Used Individually Or With Robotic Arm
- Full Electronic Controller
- Pre-Installed Casters



MBF8020GR-DWR

28.75" W x 32.5" D x 81.25" H

New Dual-Temp Reach-In Refrigerators & Freezers with Drawers

- Stainless Steel Exterior/Interior
- Refrigerator/Freezer Available On Top Or Bottom Section (1-Door Model)
- Bottom Section Available Door Or Drawers
- Drawers Include 6" Deep Metal Pans
- Two Section Units Have Freezer On Left/Refrigerator On Right
- Full Electronic Controllers
- LED Interior Light(s)
- Pre-Installed Casters & Shelf Clips
- Down-Duct Air Flow Channel To Ensure Even Distribution Of Air
- Up To 5-Year Extended Warranty Available



MBF8020GR

28.75" W x 33.75" D x 81.25" H

Dual-Temp Refrigerators & Freezers

- Stainless Steel Exterior/Interior
- 1 & 2 Door Models Available (1 Door Model Refrigerator On Top / Freezer On Bottom And 2 Door Model Refrigerator On Left / Freezer On Right)
- Full Electronic Controller
- LED Interior Light(s)
- Pre-Installed Casters & Shelves
- Down Duct Refrigeration To Ensure Even Distribution Of Air
- Up To 5-Year Extended Warranty Available



MBF8129GR

51.75" W x 31.75" D x 81.25" H

New Dual-Temp Reach-In Refrigerators & Freezers

- Stainless Steel Exterior/Interior
- Freezer On Left/Refrigerator On Right
- Full Electronic Controllers
- LED Interior Light(s)
- Pre-Installed Casters & Shelf Clips
- Down-Duct Air Flow Channel To Ensure Even Distribution Of Air
- Up To 5-Year Extended Warranty Available



EPF3495GR

59.5" W x 31.5" D x 39.3" H

Marble Top Pizza Prep. Tables

- Stainless Steel Exterior & Interior
- Marble Top
- Integrated Door Handle(s)
- Full Electronic Controller
- Optional Cold Wall Pan Rail With SneezeGuard
- Includes 1/3 Size Metal Pans
- Optional Bun Pan Rack (MPRA-7)
- Pre-Installed Casters & Shelves
- Up To 5-Year Extended Warranty Available



ESL3883GR

59.25" W x 15.6" D x 10" H

Countertop Refrigerated Prep. Station

- Stainless Steel Exterior/Interior
- Full Electronic Controller
- Cold Wall Refrigeration
- Glass Display/SneezeGuard
- Metal Pans Included

**MBF8501GR**

27" W x 31.75" D x 83.125" H

**New Bottom Mount Reach-In Refrigerators & Freezers**

- Stainless Steel Exterior/Interior
- IOT Controller
- Integrated Door Handle(s)
- Field Reversible Door(s)
- LED Interior Light(s)
- Pre-Installed Casters & Shelves
- Down Duct Refrigeration To Ensure Even Distribution Of Air
- Up To 5-Year Extended Warranty Available

**MBF8001GR**

28.75" W x 31.75" D x 81.25" H

**New Top Mount Reach-In Refrigerators & Freezers**

- Stainless Steel Exterior/Interior
- IOT Controller
- Integrated Door Handle(s)
- Field Reversible Door(s)
- LED Interior Light(s)
- Pre-Installed Casters & Shelves
- Down Duct Refrigeration To Ensure Even Distribution Of Air
- Up To 5-Year Extended Warranty Available

**MCF8622GR**

51.75" W x 33.85" D x 79.375" H

Pass-Thru Refrigerators & Freezers

- Stainless Steel Or Black Exterior/Interior
- Solid & Glass Door Models
- Full Electronic Controller
- LED Interior Light(s)
- Pre-Installed Casters & Shelf Clips
- Down-Duct Air Flow Channel To Ensure Even Distribution Of Air
- Up To 5-Year Extended Warranty Available

**MBF8532GR**

25.6" W x 26" D x 76.3" H

**Bottom Mount 1 Door Reach-In Refrigerators & Freezers**

- Stainless Steel Exterior/Interior
- Solid & Glass Door Models
- Full Electronic Controller
- LED Interior Light
- Pre-Installed Casters & Shelf Clips
- Down-Duct Air Flow Channel To Ensure Even Distribution Of Air
- Up To 5-Year Extended Warranty Available

**YRS450A/BYR0300**

22.7" W x 24.2" D x 25.8" H

YRS600A/BYR0300

22.7" W x 24.2" D x 31.7" H

New 22" Ice Machines

- Stainless Steel Exterior
- 1/2 Cube Ice
- Shown With 300 lb Bin
- 3M Water Filter System
- Up To 5-Year Extended Warranty Available

**YRM800A/BYR0400**

30.7" W x 24.2" D x 31.7" H

YRM1000A/BYR0400

30.7" W x 24.2" D x 35" H

New 30" Ice Machines

- Stainless Steel Exterior
- 1/2 Cube Ice
- Shown With 400 lb Bin
- 3M Water Filter System
- Up To 5-Year Extended Warranty Available



SBB69SGGR-AUS2

68" W x 24.5" D x 40.2" H



Shallow Depth Sliding Door Back Bar Coolers

- 48 & 68" Models
- Stainless Steel & Black Exterior Options
- Stainless Steel Interior
- Sliding Glass Doors
- Full Electronic Controller
- Pre-Installed Casters & Shelves
- Up To 5-Year Extended Warranty Available



MBB23GR

23" W x 31.1" D x 39.3" H



Back Bar Coolers

- Stainless Steel & Black Exterior Options
- Stainless Steel Interior
- Solid & Glass Door Models
- Standard & Shallow Depth Models
- Full Electronic Controller
- Door Lock(s) Standard
- Easy Glide Stainless Steel Lids
- Pre-Installed Casters & Shelves
- Up To 5-Year Extended Warranty Available



MBGF48GR

49.4" W x 26.8" D x 33.6" H



Glass Frosters

- Stainless Steel Exterior/Interior
- Full Electronic Controller
- Chills Glasses & Plates To 0°F
- Epoxy Coated Shelves
- Easy Glide Stainless Steel Lids
- Door Lock(s) Standard
- Pre-Installed Casters
- Up To 5-Year Extended Warranty Available



MKC58GR

57.8" W x 28.1" D x 40.1" H



Direct Draw Keg Coolers

- Stainless Steel Exterior/Interior
- Full Electronic Controller
- Stainless Steel Drip Tray(s)
- Dual Tap Tower(s)
- Manifold & Ball Valve Included
- Door Lock(s) Standard
- Pre-Installed Casters & Shelves
- Up To 5-Year Extended Warranty Available



MKCD23GR

23" W x 31.1" D x 50.4" H

Beverage Quick Chiller with Keg Cooler

- Rapidly Cools Drinks From Room Temperature
- Ideal For Bag-In-The Box Products
- S/S Exterior & Interior
- Dual Stainless Steel Coils
- Stand Alone Unit Can Be Used With Our Direct Draw Coolers Or Any Tap System



MKC23GR

23" W x 31.1" D x 39.25" H



Direct Draw Keg Coolers

- Stainless Steel Exterior/Interior
- Full Electronic Controller
- Stainless Steel Drip Tray(s)
- Dual Tap Tower(s)
- Manifold & Ball Valve Included
- Door Lock(s) Standard
- Pre-Installed Casters & Shelves
- Up To 5-Year Extended Warranty Available

**YBF9271/YBF9272**

32.8" W x 32.7" D x 83.9" H
19.8" W x 28.6" D x 83.9" H

**Pizza Locker With Optional Refrigerated / Ambient Section**

- 7 Lockers Per Section
- Temperature Preset To 150°F – 180°F
- Two (2) 10" Touch Screens
- Holds Prepared Food Up To 45 Minutes
- Screen Notifies When Hold Time Expires
- Infrared Sensor For Food Detection
- Optional Refrigerated Or Ambient Locker Add-On Has 8 Locker Sections

**AEP0521**

34.75" W x 38.75" D x 25.875" H

Combi Oven Proofing Stand

- Holds Up To 5 Full-Size Sheet Pans (18" x 26")
- Stainless Steel Exterior/Interior
- Temperature: 80°F – 120°F
- Individual Digital Control With High-Precision Temperature And Humidity Probe
- Humidity Control: Adjustable Humidity Levels Up To 99% RH
- Anti-Condensation Inner Top Panel To Prevent Condensation From Dripping Onto The Food
- Built-In Drain

**WLS-62L**

53.2" W x 16.5" D x 12.1" H

Sushi Display Cases

- S/S Exterior/Interior
- Sliding Rear Access Doors For Easy Loading And Serving
- Temperature Range: 32°F – 38°F For Optimal Sushi Preservation
- Forced Air Or Static Cooling With Eco-Friendly Refrigerant
- LED Interior Lighting
- Drain: Built-In Drain For Easy Cleaning And Maintenance
- Compact Footprint For Countertop Placement
- Quiet Operation Suitable For Front-Of-House Use

**QSPRO-9**

17.5" W x 31.5" D x 25" H

High Speed Cooking Oven

- Interior Cooking Chamber
Dimensions: 12-5/8" W x 10-3/4" D x 5-3/4" H
- Temperature Range: 150°F – 550°F
- Reduces Traditional Cooking Times By Up To 90%
- 7" Touchscreen With Customizable Cooking Programs
- Stainless Steel Exterior And Interior For Durability And Easy Cleaning With Ergonomical Handle
- 4" Adjustable Leg
- Ventless Operation With Catalytic Converters (No Hood Required)
- Optional Wi-Fi And Ethernet For Remote Monitoring And Software Updates
- Automatic Shut-Off, Cool-Touch Exterior, And Built-In Diagnostics

**AEC-0621E**

36" W x 42.5" D x 36.5" H

Smart Touch Combi Oven

- Designed For Maximum Steam Saturation & Humidity
- 10" Smart Screen With Chef Touch Controls
- Twin Fill Tanks
- Smart Touch Rack Timing
- Sub-Divided Heating System For Maximum Recovery
- Wi-Fi Connection, Self Diagnostics & Service Diagnostics
- Perfect Humidity Control
- Combi Smart Touch Processes
- 6 Mode Automated Combi Wash With High Pressure Coil Wash Hose
- Atosa Combi Smart Cooking
- 8 Fan Speed Balance Reverse
- USB Storage



PolarPro Edge IAC112G
13.75" W x 28.375" D x 28.75" H



PolarPro Edge IAC113G
14.125" W x 28.375" D x 28.375" H



YR140-AP-161
28.5" W x 28.5" D x 35" H



Countertop Single Flavor Gravity-Feed Ice Cream Machine

- Capacity: Hopper: 8.5 Quarts; Freezing Cylinder: 2 Quarts
- Output: Up To 42 Quarts/Hour
- Consecutive Output: Up To 35oz (12 Cones)
- Refrigeration: Air-Cooled, Top-Mount Heat Vent For Efficient Heat Release
- Construction: Stainless Steel Exterior
- Gravity-Fed Operation For Consistent Texture
- 7" Touch Screen Controls With Adjustable Consistency Settings
- Low Mix Alert And Standby Mode For Product Freshness
- Pasteurization Function For Food Safety
- Cleaning Cycle Reminder Function

Ice Machines

- 142, 283, 350, 460 & 810 lb Models Available
- S/S Exterior
- 1/2 Cube Ice
- 400 lb & 700 lb Ice Bins Available (For Modular Units)
- 350 lb Hotel Ice Dispenser Available - Full Cube
- 3M Water Filter System Standard



BlendPro Elite SRF120G
18.875" W x 37.25" D x 60.875" H

Floor Model Milkshake Machine

- Capacity: Hopper: 19 Quarts; Freezing Cylinder: 7 Quarts
- Output: Up To 100 Cups (20oz) Milkshakes Per Hour
- Power: 208-240V, 60 HZ, 3 Phase
- Refrigeration: Air-Cooled
- Construction: Heavy-Duty Stainless Steel; Removable Drip Tray For Easy Cleaning
- Dispensing System: Single Spout With Lever Operation For Precise Dispensing; 4 Flavor Dispensing Configuration Available
- Gravity-Fed System For Consistent Product Texture And Reduced Maintenance
- 7" Touch Screen With Programmable Settings For Viscosity And Temperature
- Low Mix Indicator Alerts For Timely Refills
- Standby Mode To Maintain Product Freshness During Idle Periods
- Quiet Operation Suitable For Front-Of-House Placement
- Pasteurization Function For Food Safety
- Cleaning Cycle Reminder Function
- Automatic Cleaning And Thawing Functions
- Temperature Range: Maintains Product Between 24°F – 28°F For Optimal Serving Texture



DualFusion X CB3L011

11.5" W x 21.875" D x 27.5" H



DualFusion X CB3T011

11.5" W x 21.875" D x 35.375" H



DualFusion X CB3T021

21.625" W x 21.875" D x 35.375" H

Coffee And Tea Brewer (Short And Tall Models)

- Brew Capacity: Up To 160 Cups (12 Gallons) Per Hour
- Dual Voltage: Field Adjustable For Both 120V Or 208–240V, 60 HZ, 1 Phase
- Twin Models Available: CB3L021/CB3T021
- Stainless Steel Body For Durability And Easy Cleaning
- Supports Standard 1 Gal / 1.5 Gal Coffee Servers Or Tea Dispensers
- Removable Drip Tray For Easy Cleanup
- Digital Touchscreen Controls With Programmable Brewing Profiles
- Compatibility: Accommodates Larger Coffee Servers Or Tea Dispensers



COFFEE SERVER

9.3" W x 22.8" D x 13" H



TEA DISPENSER

6.2" W x 21.8" D x 18.7" H

Coffee Server

- Capacity: 1 Gal Or 1.5 Gal
- Stainless Steel Interior For Heat Retention
- Insulation: Double-Wall Vacuum Insulation To Maintain Temperature For Up To 24 Hours
- Spout: Drip-Free Dispensing Spout For Precise Pouring

Tea Dispenser

- Capacity: 1-5 Gal
- Material: Stainless Steel Or BPA-Free Plastic Body
- Lid: Removable Lid For Easy Refilling And Cleaning
- Spigot: Durable, No-Drip Spigot For Consistent Dispensing



MWSSE243674

24" W x 36" D x 74" H

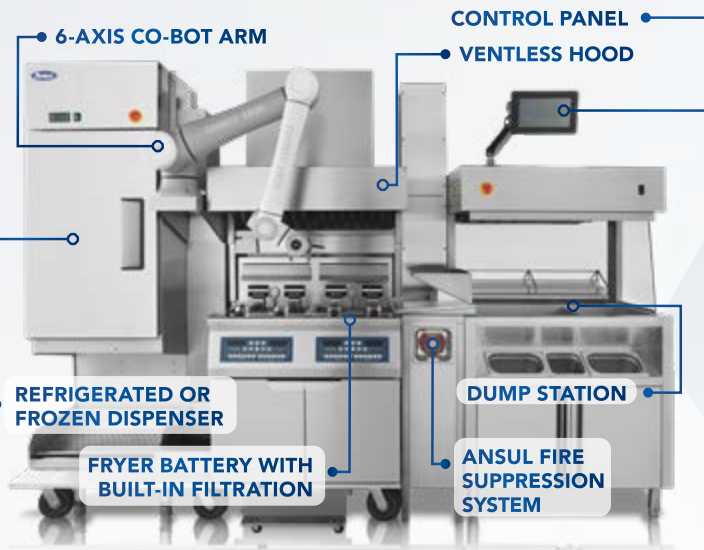


Slate Gray Epoxy Shelving Kits

- Epoxy Coated, Corrosion Resistant
- Four (4) Shelf Kits Include Sixteen (16) Double Locking Sleeves And Four (4) 74" Posts
- Five (5) Shelf Kits Including Twenty (20) Double Locking Sleeves And Four (4) 86" Posts
- 24", 36", 48", 60" & 72" Shelf Widths Available
- 18" & 24" Depths Available



INTELLIGENT FRENCH FRY ROBOTIC SOLUTION

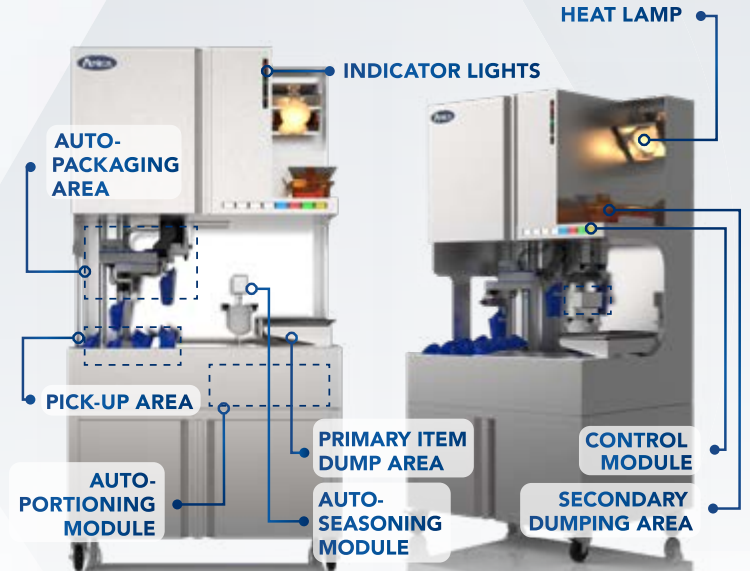


STANDARD FEATURES

- Choice of refrigerated or frozen dispensers. Single, double, or triple sized dispensers are available.
- The dispensers can be used with the robotic arm or product can be manually dispensed.
- 6-Axis Co-bot Arm available in 51", 55", 63" sizes.
- Dump Stations available in 24", 36", 48" sizes.
- Double Fryer Battery with built-in filtration standard. Optional Triple Fryer Battery available.
- Touch Screen Control Panel.
- Hood with Ansul Fire Suppression System.
- Stations are interchangeable, allowing both left-to-right or right-to-left functionality.
- Robotic arm and dispensers are the only required equipment and can work with your existing equipment.
- ROI averages less than a year and is a capital expenditure. There are no hardware or software fees.



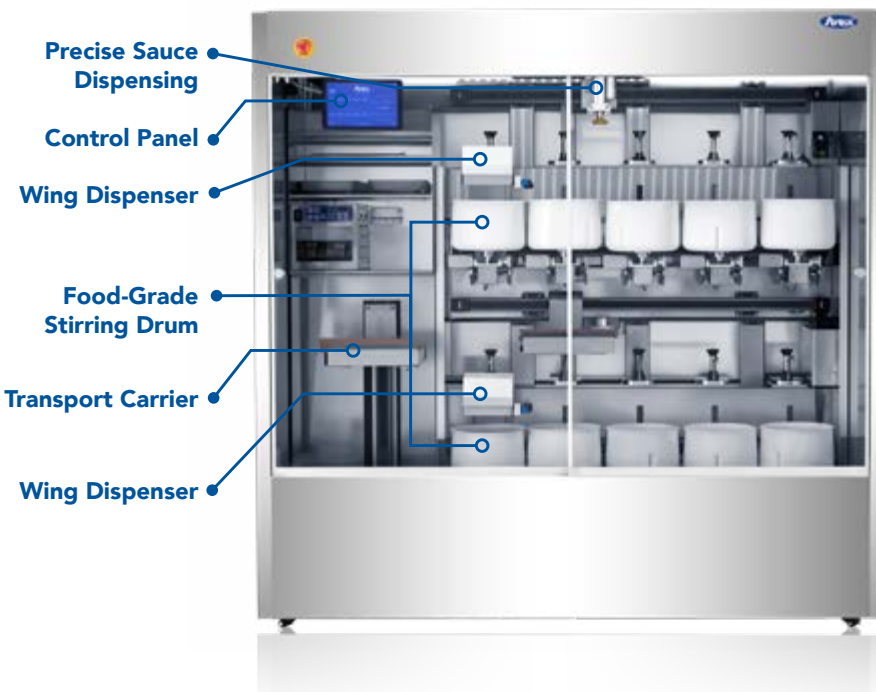
ATOSA AUTO SEASONING & AUTO PACKAGING SOLUTION



STANDARD FEATURES

- Secondary Dumping Area: Allows for 2nd & 3rd items to wait to be seasoned and is a warming area. Our removable warming tray system allows you to transition product to a warming cabinet or serving line.
- Control Module: Allows for versatility in sizing (L/M/S/K) of cartons for the orders.
- Seasoning Module: Allows for customizable seasoning settings for seasoning of multiple products ensuring consistency and even distribution.
- Packaging Module: Automatically packages the carton size selected.
- Organizing Robot Arm: Picks up the filled cartons and organizes them in the warming pick-up area for manual selection.

WING SAUCE MASTER



STANDARD FEATURES

- Wide Applicability: Designed for various foods and sauces (specifically liquid sauces with a flowability of less than 4mm), with automatic stirring capabilities.
- Precise Sauce Dispensing: Equipped with recipe-based pump system to automatically dispense the required amount of sauce with high precision. Ensures no dripping or waste.
- Food-Grade Stirring Drums: The stirring drums, ranging from 4-24 drums, are made of food-safe materials and can rotate or tilt at any angle, ensuring thorough and uniform mixing.
- High Efficiency with Multi-Station Mixing: Features dual-layer, multi-position collaborative mixing, significantly improving operational efficiency.
- Automated Material Handling: Provides automatic material dropping and collection systems, reducing labor intensity and improving convenience.

EXTENDED WARRANTIES NOW AVAILABLE



Up To 5 Years Parts & Labor On All Refrigeration,
Cooking Equipment, Ice Machines & Steam Tables

Atosa Core Values

Unmatched Quality, Value, and Service
Which is why we are pleased to offer extended warranties

Give Yourself Peace of Mind

Extend your warranty to a full 5-year parts and labor warranty
for less than the cost of one service call

Atosa Standard Warranties

Refrigeration & Ice Machines - 2-year parts & labor, 5-year compressor
Cooking Equipment & Steam Tables - 1-year parts & labor

INTRODUCING THE **FIRST AFFORDABLE COMBI OVEN SERIES** IN THE INDUSTRY



Easy-to-use
10" Smart Touch Display

6 Mode Automated
Wash Cycles

8 Fan Speeds

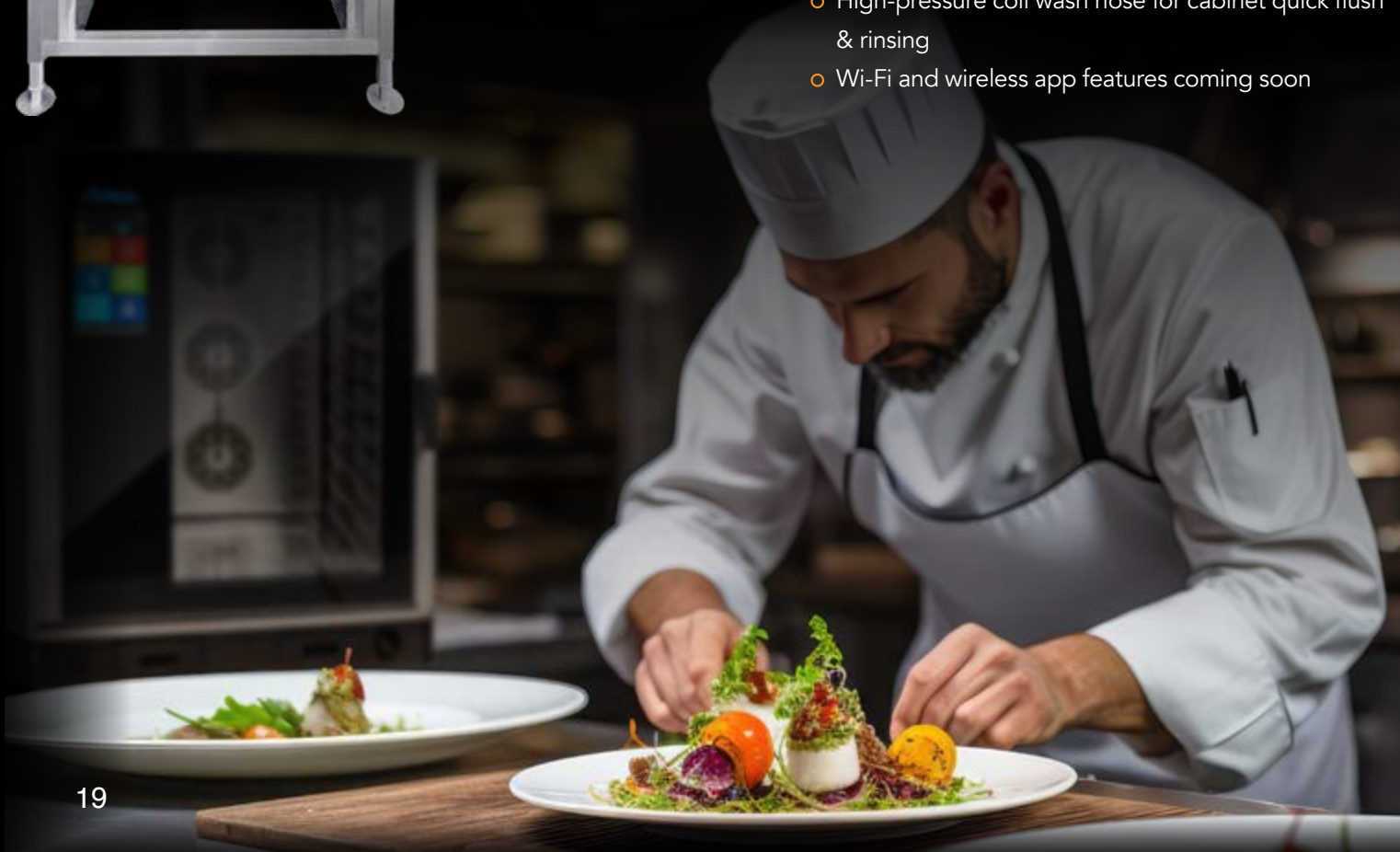
Stainless Steel
Construction

Triple-pane
Tempered Glass Door

Optional Stand

STANDARD FEATURES

- Easy-to-use 10" Smart Touch Controls for manual and programmed cooking
- Atosa Combi Smart Cooking which monitors cabinet cooking
- Perfect humidity control to maximize steam saturation
- 8 fan speeds with balance reverse for the perfect bake and browning
- 6 mode automated combi wash cycles with twin chemical fill tanks
- Sleek design – triple-pane tempered glass door with stainless steel construction in a condensed footprint
- Footless design – for ergonomic footing & stability
- Subdivided heat system for maximum recovery
- Smart Touch rack timing for batch and a la carte cooking
- Proprietary Atosa chemicals available
- High-pressure coil wash hose for cabinet quick flush & rinsing
- Wi-Fi and wireless app features coming soon



INTRODUCING THE NEW GENERATION OF COLD STORAGE

WALK-IN COOLERS AND FREEZERS



White exterior & interior finish

36" door standard with diamond tread kick plates

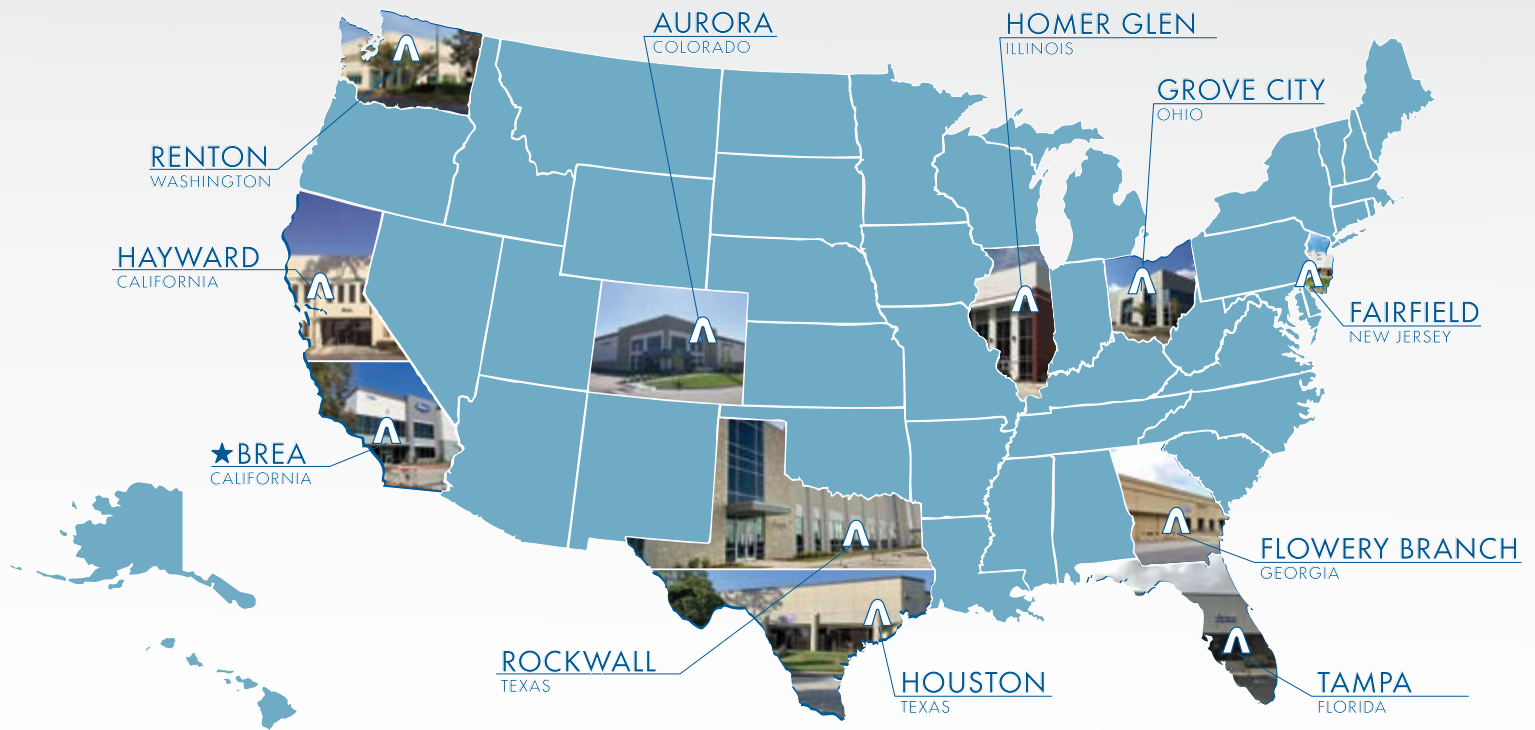
Interior ramp



STANDARD FEATURES

- White exterior & interior
- 20% more efficient than most walk-in series on the market
- Available in sizes from 6' x 6' up to 10' x 12' (indoor only)
- Coolers available with floor or floor screeds
- Freezers available with floor
- Foamed-in-place 4" panels with cam locks
- Available with top mount drop-in refrigeration system or remote condensing unit
- Two (2) adjustable KASON hinges standard (new series)
- 36" door with diamond tread kick plates and heated frames standard
- Left-hinged & right-hinged doors available
- Heavy duty KASON door handle with lock and inside safety release
- Interior ramp
- 48" ceiling mount LED standard





HEADQUARTERS

201 North Berry St.
Brea, CA 92821
Tel: (909) 595-2688
Email: socal@atosausa.com

NORTHERN CA

2399 W. Winton Ave. Ste A
Hayward, CA 94545
Tel: (510) 670-2951
Email: sf@atosausa.com

WASHINGTON

4051 Oakesdale Ave SW, Ste C
Renton, WA 98057
Tel: (253) 236-5295
Email: seattle@atosausa.com

COLORADO

19700 East 23rd Ave. Bldg 2, Unit B
Aurora, CO 80011
Tel: (303) 577-0061
Email: denver@atosausa.com

SOUTHERN TEXAS

11440 Tanyard Creek Drive, Ste 4
Houston, TX 77040
Tel: (281) 877-0200
Email: houston@atosausa.com

GEORGIA

6533 McEver Road Building 200,
Flowery Branch, GA 30542
Tel: (770) 248-9797
Email: atlanta@atosausa.com

ILLINOIS

14555 S Gougar Rd, Unit 300
Homer Glen, IL 60491
Tel: (815) 838-9503
Email: chicago@atosausa.com

OHIO

3609 Gantz Rd.
Grove City, OH 43123
Tel: (614) 567-6186
Email: ohio@atosausa.com

NORTHERN TEXAS

3201 Capital Blvd., Ste 200
Rockwall, TX 75032
Tel: (817) 385-0890
Email: dallas@atosausa.com

FLORIDA

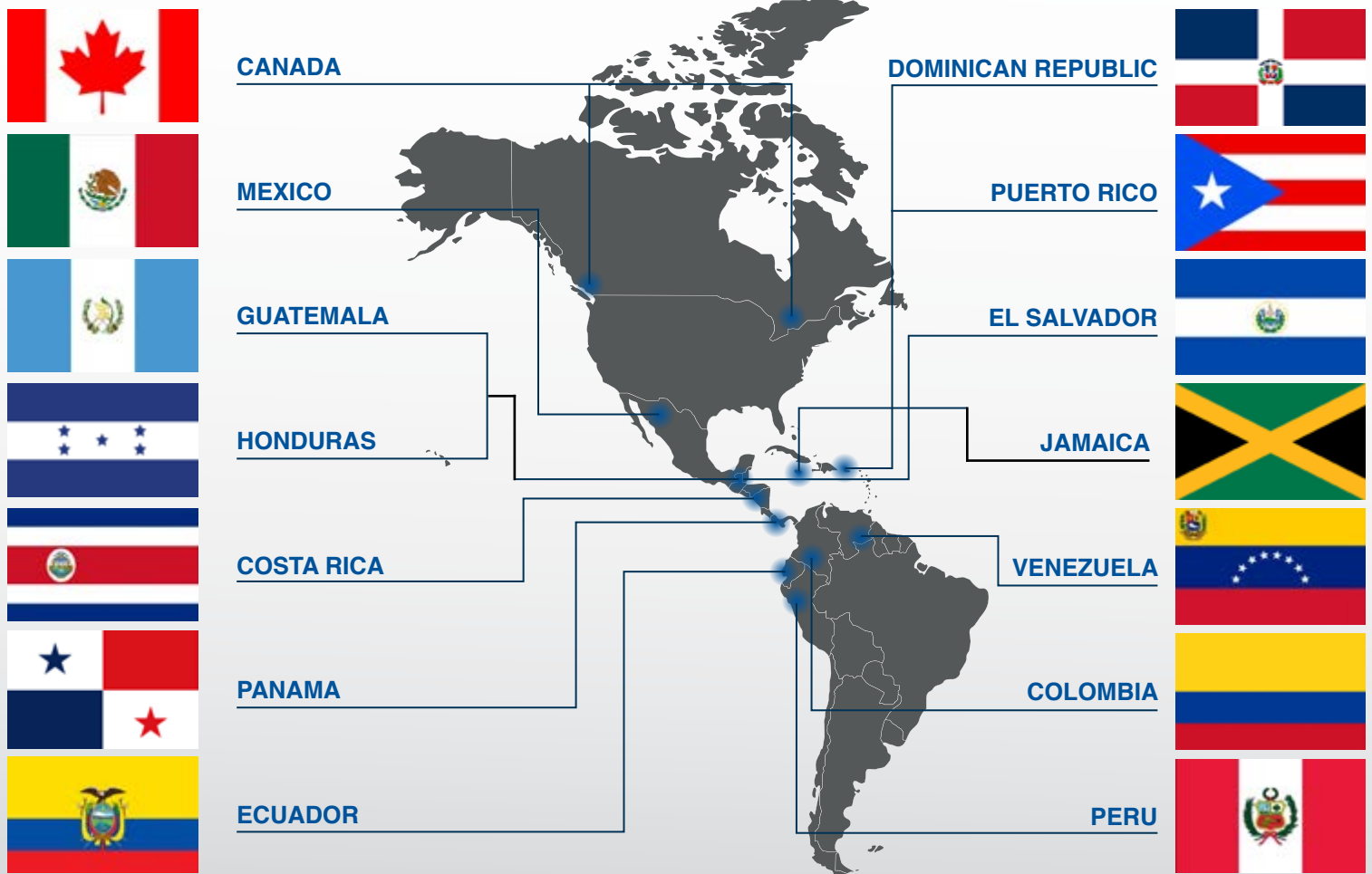
4415 Eagle Falls Place,
Tampa, FL 33619, USA
Tel: (863) 698-7905
Email: orlando@atosausa.com

NEW JERSEY

12 Gardner Rd.
Fairfield, NJ 07004
Tel: (201) 355-8257
Email: nj@atosausa.com

HAWAII

**Restaurant Equipment
Distribution**
815 Waiakamilo Road
Honolulu, HI 96817
Tel: (808) 490-5460
sales@RED-hawaii.com

**CANADA WEST**

15010 54A Ave,
Surrey, BC V3S 5X7 Canada
Tel: +1 (855) 885-6518
CSR: +1 (626) 898-7998 EXT: 1302,
1303, 1304
Email: west@atosaca.com

CANADA EAST

Unit 1, 6670 Fifth Line,
Milton, ON L9E 0E9 Canada
Tel: +1 (855) 885-6518
CSR: +1 (626) 898-7998 EXT: 1201,
1202, 1204
Email: east@atosaca.com

INVENTTO PANAMA S.A

Calle via Israel, Sunset street mall local 11
planta baja corregimiento San Francisco,
Ciudad de Panamá, Panamá
Tel: +57 313 3960829
Tel: +507 6413-2288

Email: comercial5@inventtogroup.com

EQUINDECA CIA LTDA.

Juan Larrea Guerrero y Alferes Manuel Cajias.
Cuenca, Ecuador
Tel: +593 99 511 5137
Email: proyectos@equindeca.com

OTEC, C.A.

C.G. Las Mercedes, OFIC 15, Urb. Las
Mercedes, Caracas, Venezuela, 1060
Tel: +58 414-2416494
Email: ventas@otec.com.ve

INVENTTO GROUP

1. Calle 9 #42-18 Medellin, Colombia
2. Calle 98 # 49 C 37 Barrio Villa Santos
Barranquilla, Colombia
3. Carrera 22 # 81 - 50 Bogota, Colombia
Tel: +57 311 308 1026
Email: marketing@inventtogroup.com

GRUPO ALPHA SIMET SA DE CV

Liverpool 60, Juárez, Cuauhtémoc,
06600 Ciudad de México, CDMX
Mexico
Tel: +52 55 80521911
Email: dgarcia@grupoalpha.com

JOPCO DE CENTROAMERICA S.A.

Última Park 2, Bodega 32.
Escazú, San José, Costa Rica
Tel: +506-2215-3545
Email: Gustavo.jop@jopco.net

INTER-AMERICANA, S.A.

0 avenida 23-13, zona 17, Centro de
Negocios La Paz, bodega #103
Ciudad de Guatemala,
Guatemala, C. A. 01017
PBX: +502 2427-5000
Email: ventas@inter-americana.com

**GRUPO ALPHA (FOOD
SERVICE PROFESSIONALS)**

Calle Enrique Palacios 165 miraflores
Tel: +051-958989235
Email: Cbarrientos@foodservice.pe

EQUIPAMOS SRL

Av Simón Bolívar 308, Santo Domingo,
Dominican Republic
Tel: (809)-586-6999
Email: massieleusebio@equipamos.com

**INTERNATIONAL MERCHANT
COMPANY S.A. DE C.V.**

12 Calle 2 ACE N.O. BO LAS ACACIAS
San Pedro SULA, Honduras
Tel: +504 3170-3521
Email: ventas@imercohn.net

REFRIGERAMA

Urb Bayview, Main Avenue # 14,
Cataño, Puerto Rico 00962
Tel: +1 (787) 275-0000
Fax: +1 (787) 275-3300
Email: info@refrigerama.com

**RAYTON ELECTRIC COMMERCIAL
EQUIPMENT LTD.**

16 Red Hills Road, St. Andrew, Kingston,
Jamaica
Tel: +1-876-929-2000
Email: Shannon@raytonjamaica.com

**GRUPO ROMENA /
CHEF EQUIPMENTS**

Residencial El Carmen, Ciudad Merliot,
Edificio ROMENA
Tel: +503 2560-3700
Email: rjm@gruporomena.com

Tel: 855 - 855 - 0399

Email: info@atosausa.com

Website: www.atosausa.com



**YOUR SINGLE SOURCE DIVERSIFIED
GLOBAL SOLUTION**