






PrepPal *CookRite* Mixrite



## ATHC & ATWC MANUAL

ATHC-9-ES / ATHC-18-ES  
ATWC-12 / ATWC-24

 Toll Free: (855) 855-0399  
 [info@atosausa.com](mailto:info@atosausa.com)  
 [www.atosausa.com](http://www.atosausa.com)

# Table of Contents

Safety Precautions .....	3
Installation.....	4
Door Reversal.....	5
Operating Instructions .....	9
Control Panel.....	9
Power-Up.....	9
Operations .....	10
Cleaning.....	11
Cleaning the Cabinet .....	11
Troubleshooting .....	12
ATHC-18ES .....	14
ATHC-9ES .....	15
ATWC-24 .....	16
ATWC-12 .....	17
Electrical Box (ATHC-9ES & ATHC-18ES) .....	18
Electrical Box (ATWC-12 & ATWC-24) .....	19
Wiring Diagram (ATHC-9-ES & ATHC-18-ES).....	20
Wiring Diagram (ATWC-12 & ATWC-24) .....	21

## Safety Precautions

### Warning

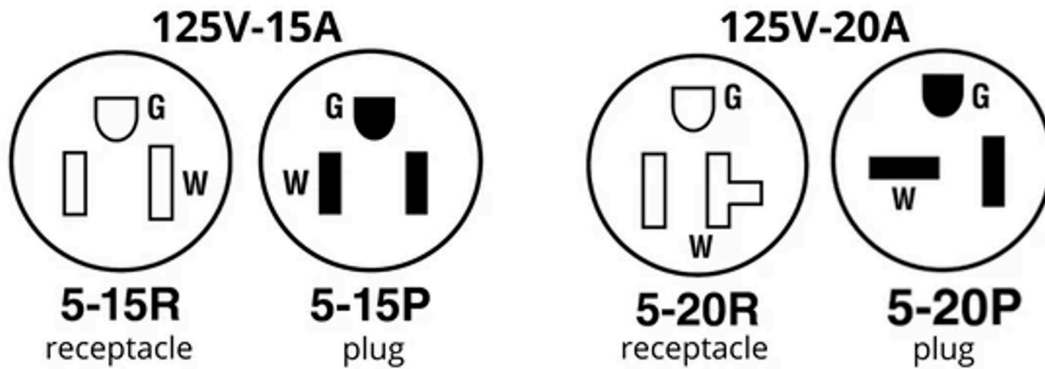
- Read these safety instructions thoroughly before connecting this product to the main power supply.
- Before turning it on, make sure the voltage of your electricity supply is the same as what is indicated on the rating label. This product is designed to operate at 120V AC, 60Hz (1 phase). Connecting it to any other power source may cause damage.
- Check the power cord occasionally for damage. Do not use the cabinet if the power cord is damaged.
- Only factory-approved service agents should attempt to service, repair, or replace electrical components, wiring.
- Unplug the cabinet before cleaning or servicing. Do not wash the cabinet with a water jet or high-pressure water.
- Do not allow combustible materials to be stored or accumulate on, under or next to the cabinet.

### Caution

- This cabinet is for hot food holding applications only.
- Pre-heat the cabinet to the desired temperature before placing cooked or hot food into the cabinet. This is not a reheating cabinet. Food must be at the appropriate temperature before being placed into the cabinet. Use a food probe to check the internal food temperature — the cabinet temperature is not the internal food temperature.

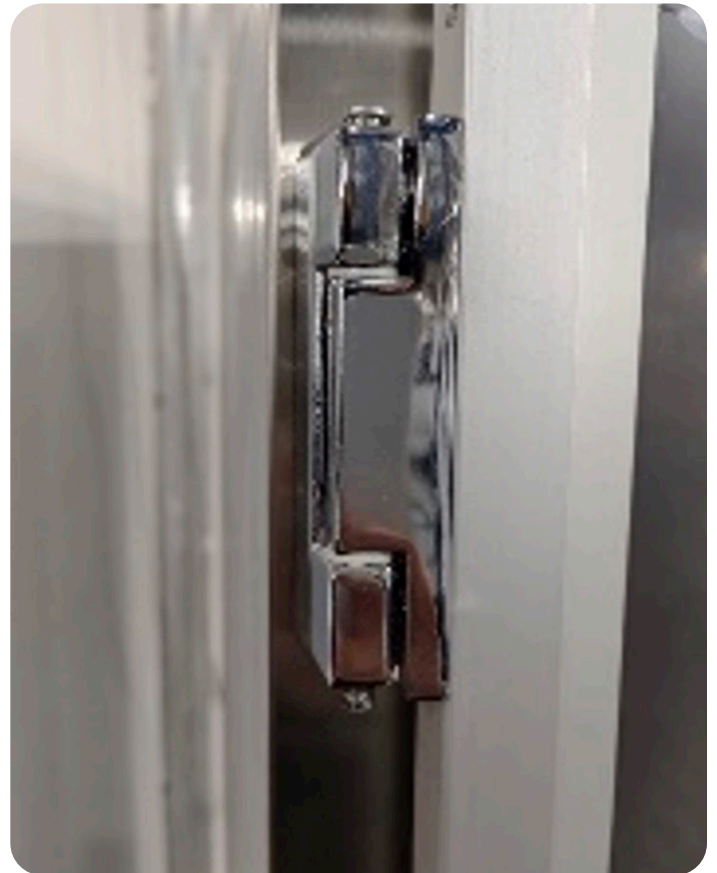
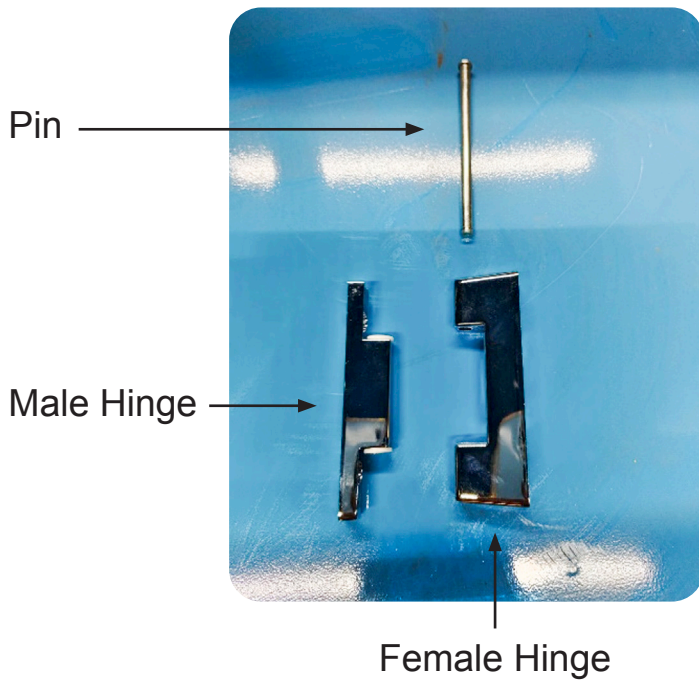
## Installation

- Before unpackaging, check if there is any shipping damage.
- After unpacking the cabinet, remove all tape and packing material from the inside as well as outside of the cabinet.
- Any protective covers (plastic or shim wrap) on the sheet metal or door also be removed before turning on.
- Put the cabinet in the right position and lock the brakes of the caster before connecting the power cord.
- For ATHC, cabinets rated at 120V 1900W must be plugged into a 20-amp 125VAC receptacle (5-15R); For ATWC, Cabinets rated at 120V 1580W must be plugged into a 15-amp 125VAC receptacle (5-20R). Ensure the Power Switch is OFF then plug into the appropriate outlet.



## Door Reversal

The connection between the cabinet and door frame is the door hinge set. The one on the cabinet is the female hinge and the one on the door frame is the male hinge.

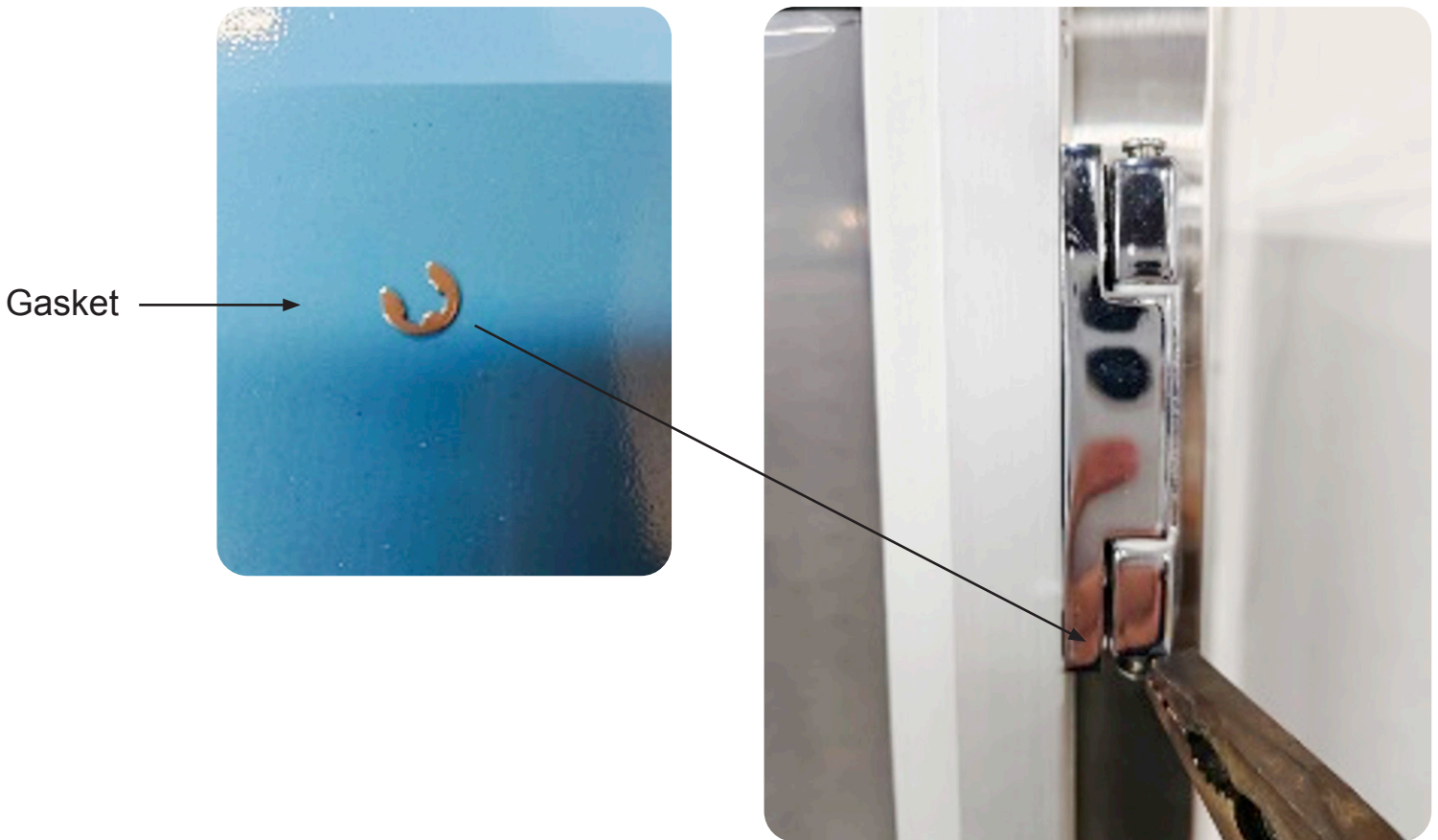


Door Hinge Set

## Door Reversal (Cont'd)

Following are the steps for switching the door opening direction:

1. Remove the pins connected to the male hinge and female hinge. When removing the pin, use the plier to take the gasket around the pin's washer out then push from the bottom and take them out from the top. After removing two pins for both hinges, lift the door off.



## Door Reversal (Cont'd)

2. Remove the two screws from the male hinge. Remove the cover on the door handle then take the screws out.



3. Install the removed male hinges and door handle back on the opposite side.

## Door Reversal (Cont'd)

4. Remove the female hinges and the magnet on the cabinet.



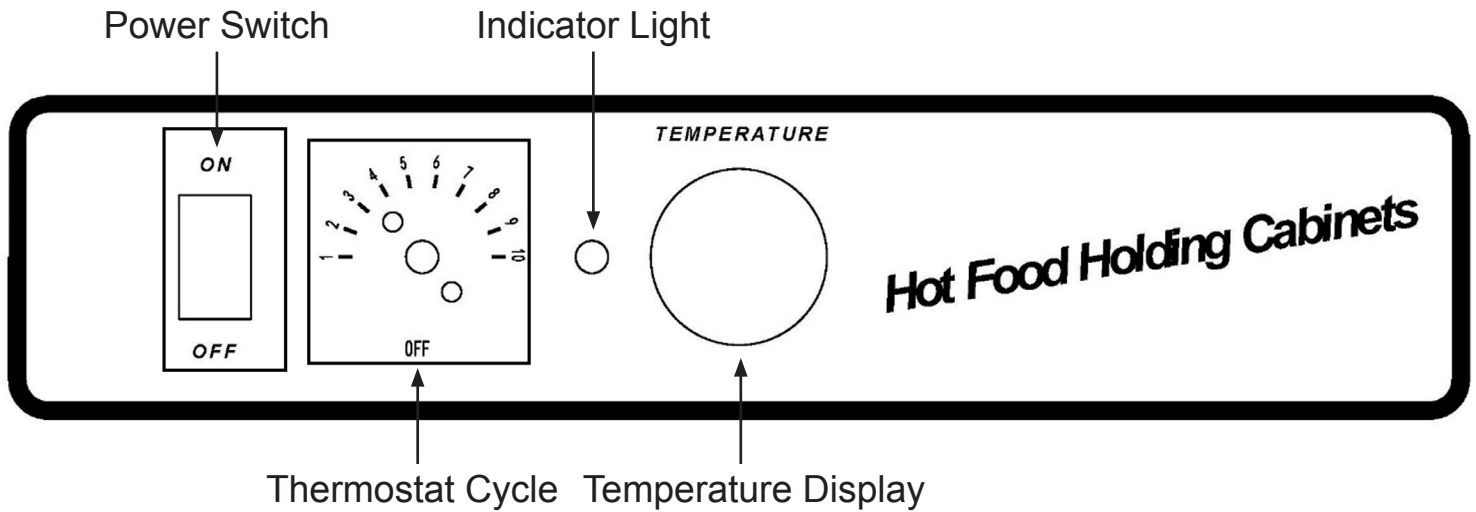
5. Install the removed female hinges, magnet, and door handle back on the opposite side. Reattach the door.

6. Secure with the pins and gasket in the same way as take them out. The door opening direction change is complete.



# Operating Instructions

## Control Panel



## Power-Up

Refer to the data plate located near the power cord for the electrical specifications of the cabinet. With the POWER switch OFF, plug into a grounded receptacle.

# Operating Instructions (Cont'd)

## Operations

1. Set POWER switch to the ON position.
2. Set TEMPERATURE control to 10.
3. Pre-heat cabinet until desired temperature is reached (typical heat-up time from 72°F (22°C) ambient to 160°F (71°C) is approximately 15 minutes for ATHC-9ES/18ES and ATWC12/24.
4. Re-set TEMPERATURE controls and adjust as necessary to reach the desired temperature (setting 8-9 typical for 167°F (75°C) to 195°F(90°C)). Power indicator light will turn on and off as the heat thermostat cycles.

Following is the temperature of different thermostat positions:

Position	Temperature (°F)	Position	Temperature (°F)
1	86-91.4	6	141.8 - 156.2
2	91.4-105.8	7	154.4 - 168.8
3	104.0 - 118.4	8	167.0 - 181.4
4	116.6 - 131.0	9	179.6 - 194.0
5	129.2 - 143.6	10	192.2 - 206.6

## Cleaning

- **DO NOT** wash the cabinet with high-pressure water or a water jet.
- **DO NOT** spray or pour water into the electrical box. Excess water may cause the heated control drawer module to short circuit or cease working.

## Cleaning the Cabinet

1. Ensure the power cord is unplugged.
2. Using a mild detergent and a clean cloth, wipe down all interior and exterior surfaces excluding the door panel.
3. Using a clean cloth, wipe down all surfaces and then let the air dry.

## Troubleshooting



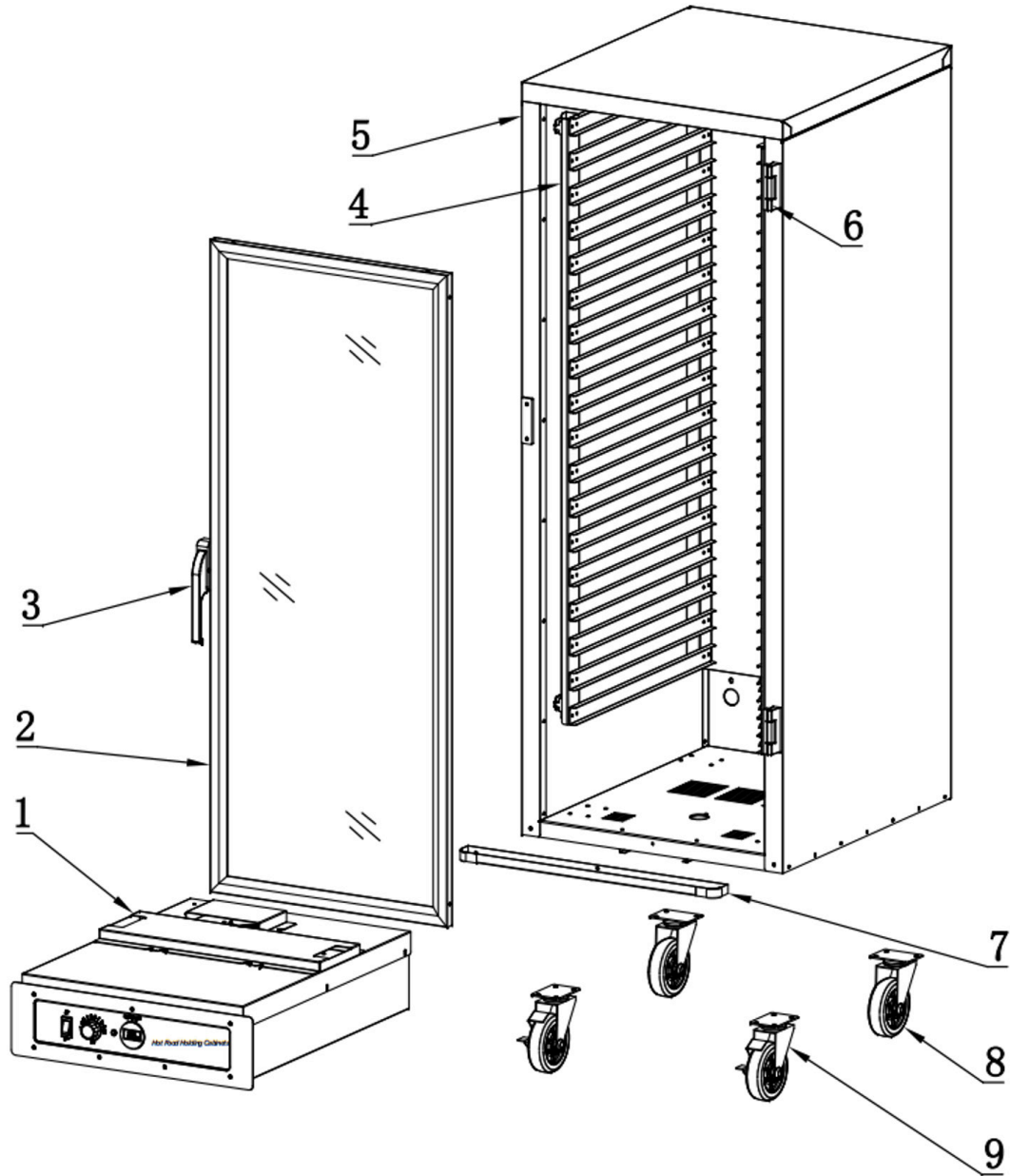
**WARNING:** ALWAYS unplug the cabinet from the electrical outlet for safety purposes, minimizing the risk of electrical shocks.

Problem	Possible Cause	Solution
Controls do not work (Digital thermometer and indicator light(s) not on)	The outlet does not have power.	Check that the outlet has power.
	Power switch is not in the ON position.	Check that the power switch is in the ON position.
	Wire connected error.	Check the cabinet wiring from the power cord to the power switch and to the terminal block.
	Power switch could be malfunctioning.	Ask technician for help.
Temperature too hot	Temperature set too high.	Turn the control knob down to a lower setting. Wait several minutes and see if the displayed temperature decreases.
	Thermostat may have failed due to contacts closed.	Ask technician for help.
	If displayed temperature exceeds 220°F (104°C): Blower wiring is faulty or disconnected.	Seek technical support.
	Blower needs to be replaced.	Ask technician for help.
	The thermostat or blower may have failed, and the thermal overload device is controlling the temperature.	Ask technician for help.

## Troubleshooting (Cont'd)

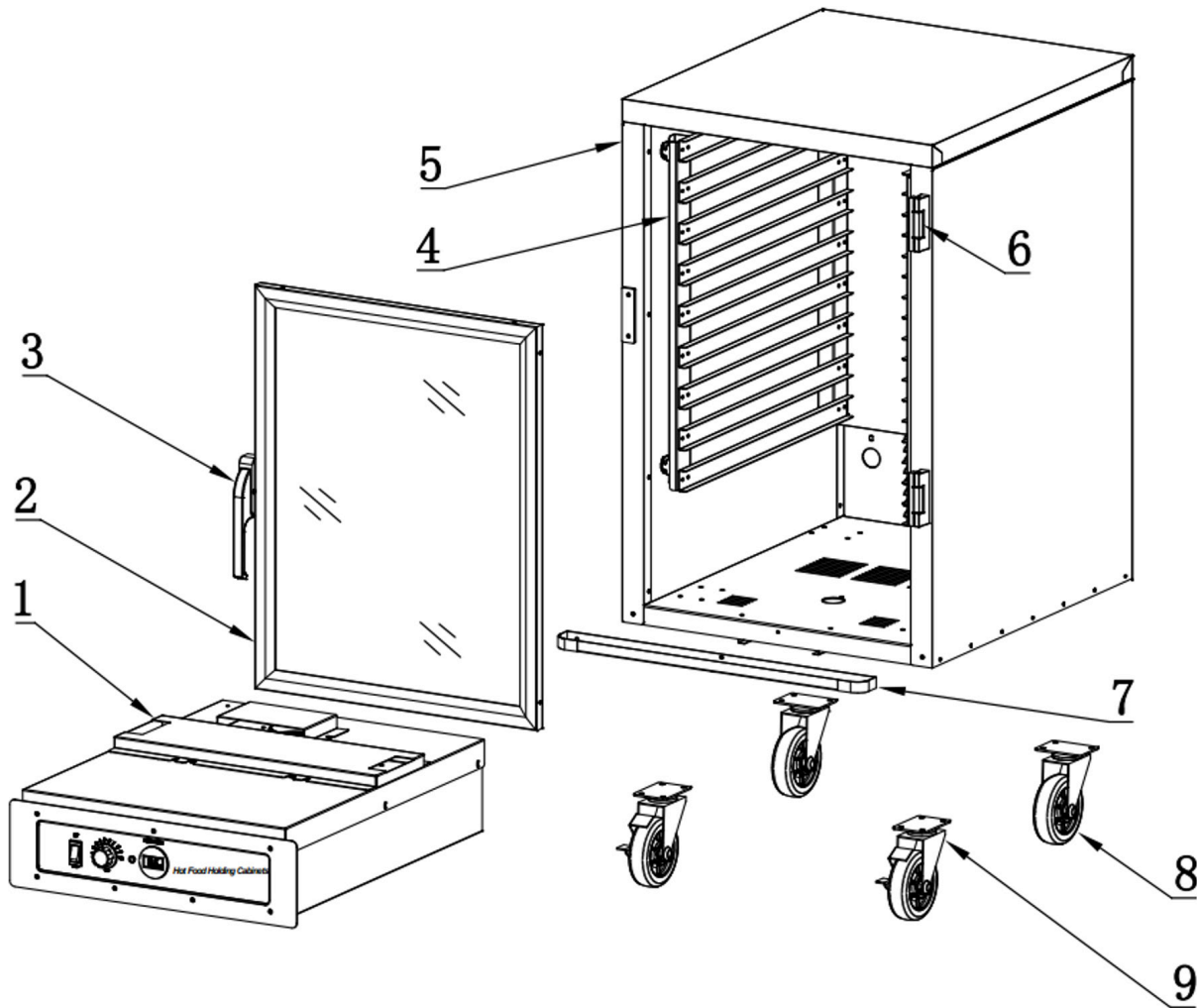
Problem	Possible Cause	Solution
Temperature too low	The cabinet may still be in pre-heat or recovering from a door being opened.	Wait patiently for several minutes and check again.
	Temperature set too low.	Turn temperature control knob to a higher setting. Wait several minutes and see if the displayed temperature increases.
	Door is not closed or sealing properly.	Check the door whether it is opened or broken.
	Blower wiring is faulty or disconnected.	Ask technician for help.
	Blower needs to be replaced.	Ask technician for help.
Indicator light not working	Thermostat contacts may not be closing, and the heating element is not being energized.	Check the thermostat, pilot light, and their respective wiring.
No heat generated	Air heating element may be faulty.	Check the thermostat and their respective wiring. If still cannot solve the problem, ask the technician for help.
	The wiring to the air heating element may be faulty or disconnected.	
	The thermostat may be faulty.	

**ATHC-18ES**



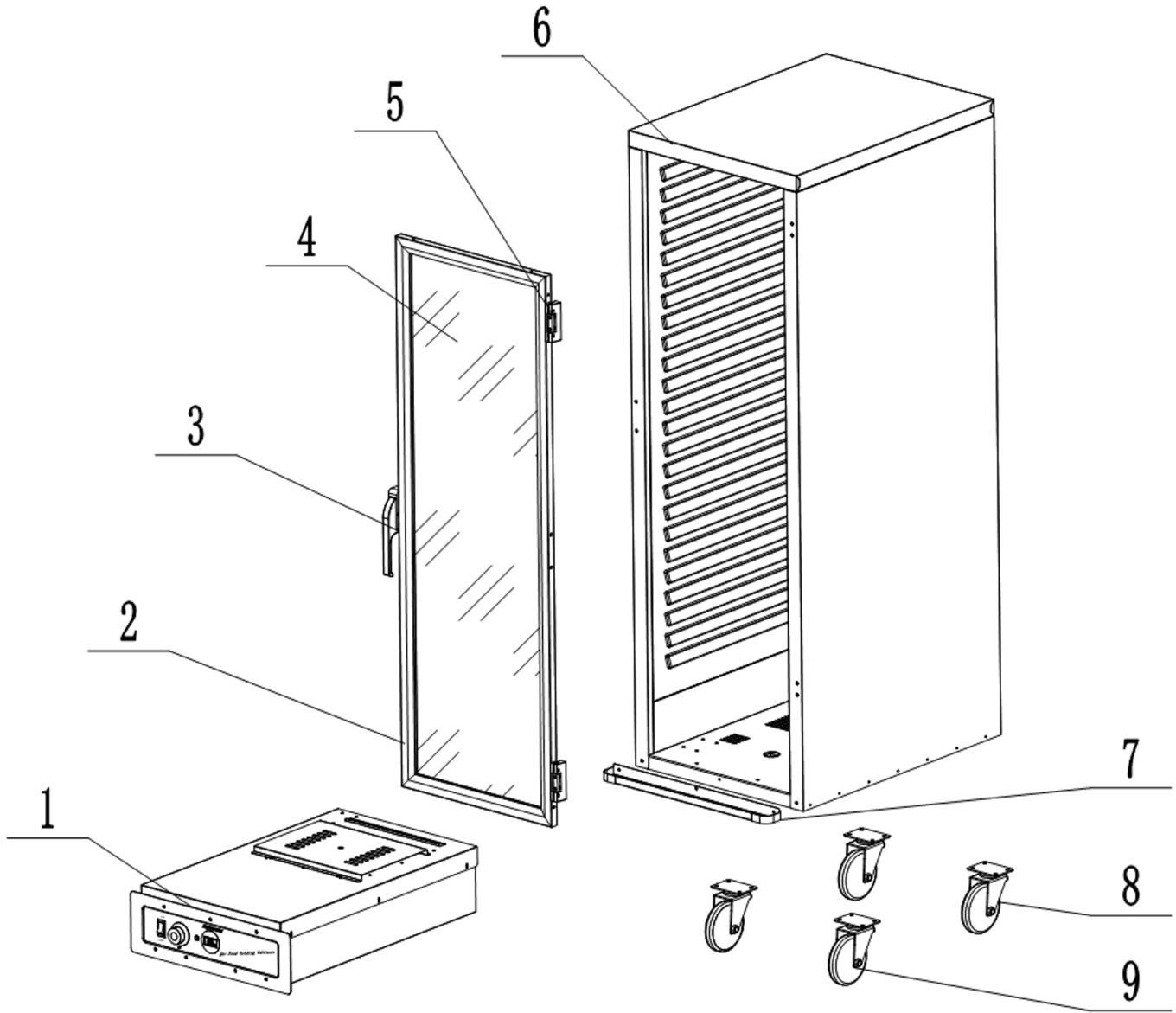
Item	Description	Qty	Item	Description	Qty
1	Electrical Box	1	6	Door Hinge Set	2
2	Door Frame	1	7	Sink-Front	1
3	Door Handle	1	8	No-Brake Caster	2
4	Food Pan Bracket	2	9	Brake Caster	2
5	Cabinet	1			

# ATHC-9ES



Item	Description	Qty	Item	Description	Qty
1	Electrical Box	1	6	Door Hinge Set	2
2	Door Frame	1	7	Sink-Front	1
3	Door Handle	1	8	No-Brake Caster	2
4	Food Pan Bracket	2	9	Brake Caster	2
5	Cabinet	1			

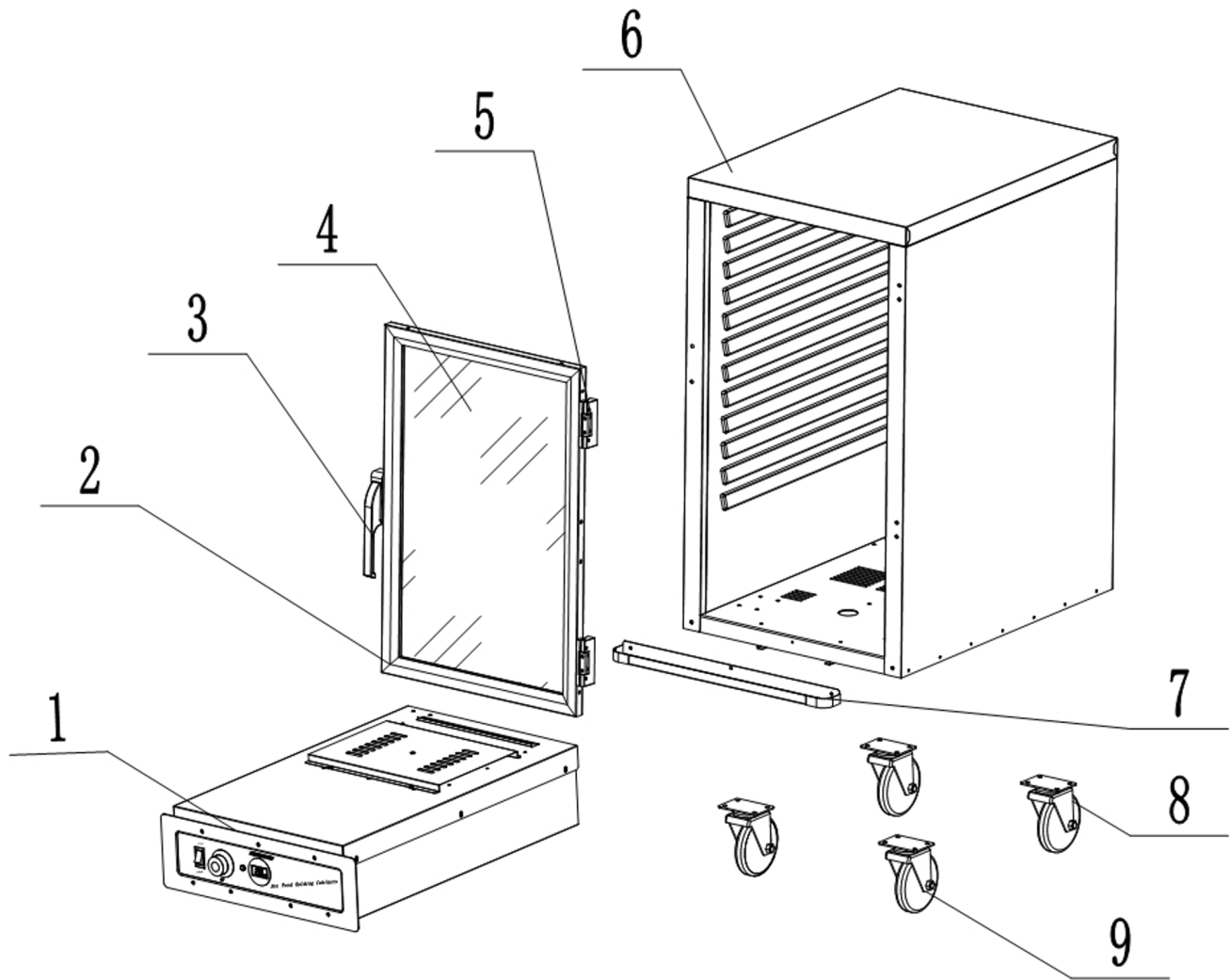
**ATWC-24**



Item	Description	Qty	Item	Description	Qty
1	Module	1	6	Cabinet	1
2	Door Frame	1	7	Sink-Front	1
3	Door Handle	1	8	No-Brake Caster	2
4	Pc Board	1	9	Brake Caster	2
5	Door Hinge	2			

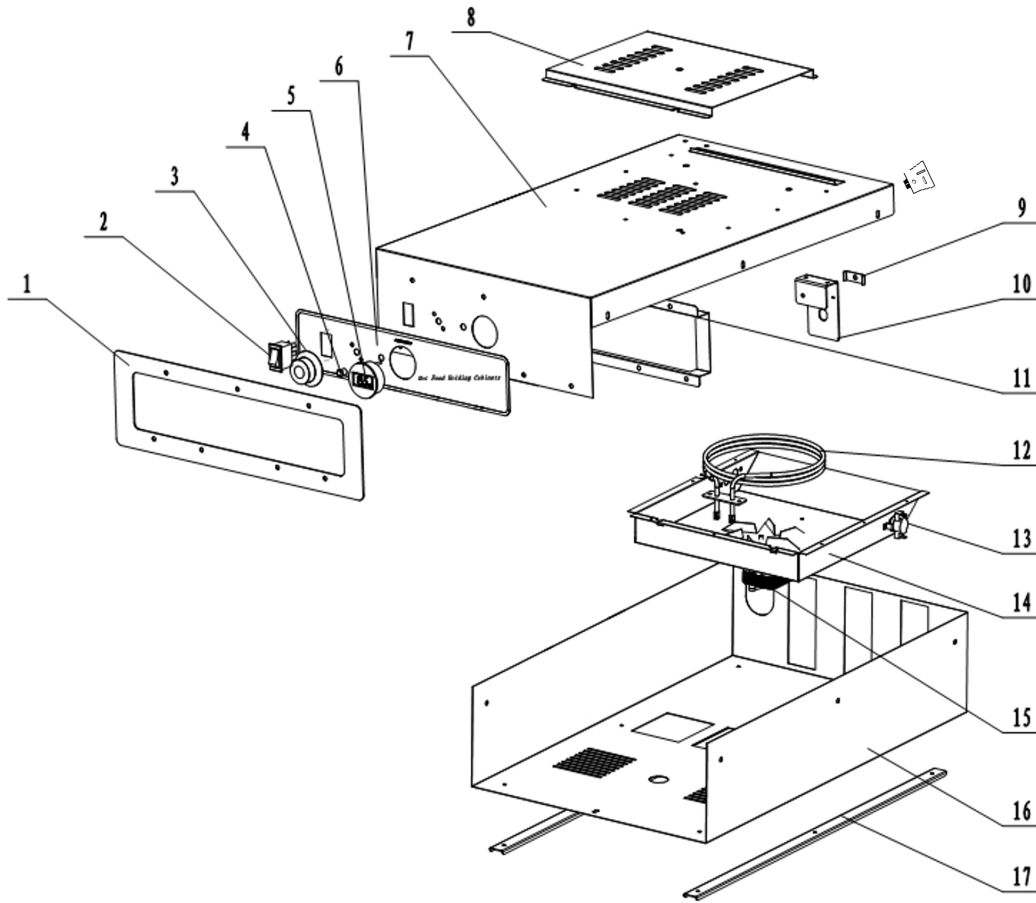


# ATWC-12



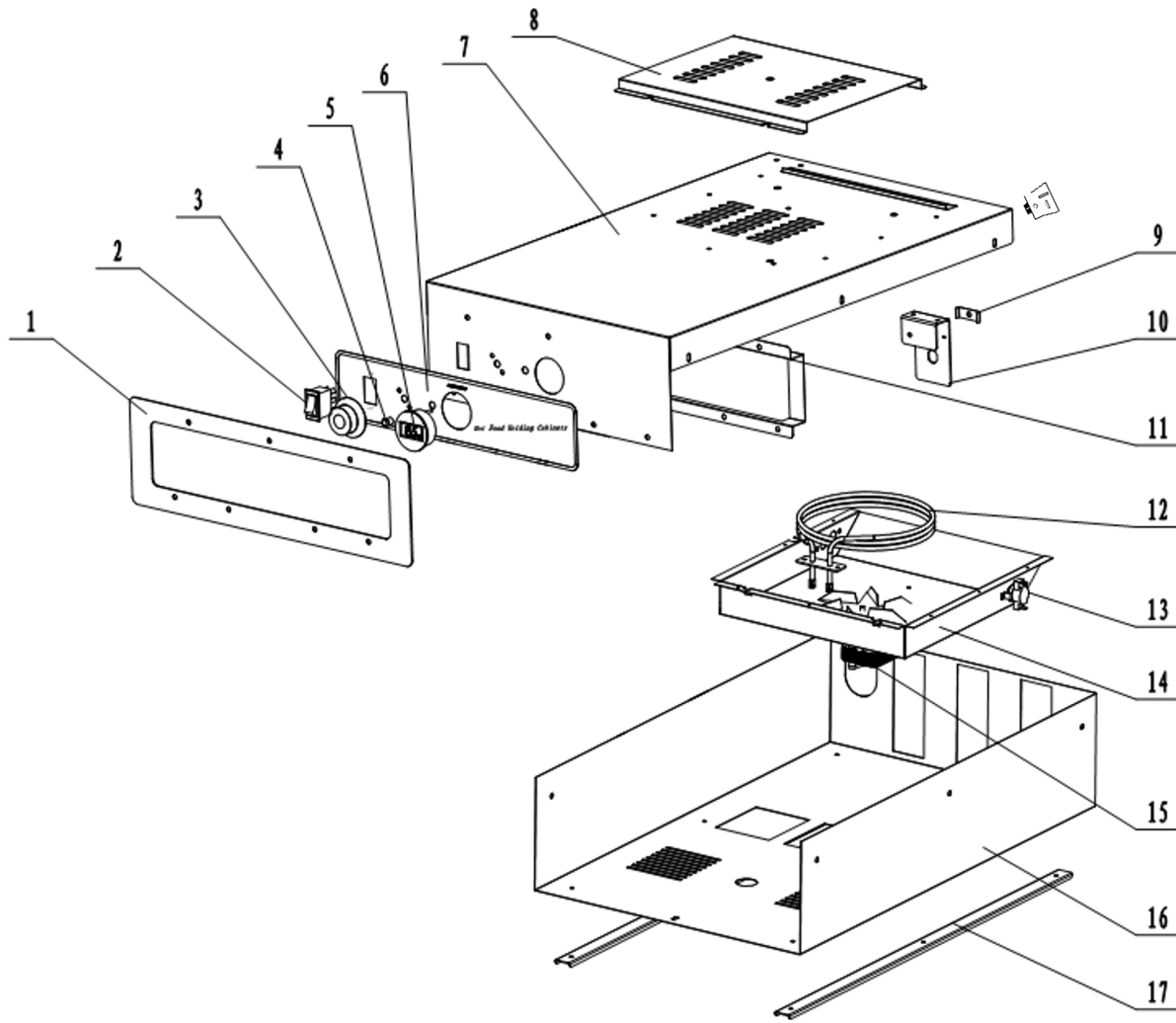
Item	Description	Qty	Item	Description	Qty
1	Module	1	6	Cabinet	1
2	Door Frame	1	7	Sink-Front	1
3	Door Handle	1	8	No-Brake Caster	2
4	Pc Board	1	9	Brake Caster	2
5	Door Hinge	2			

## Electrical Box (ATHC-9ES & ATHC-18ES)



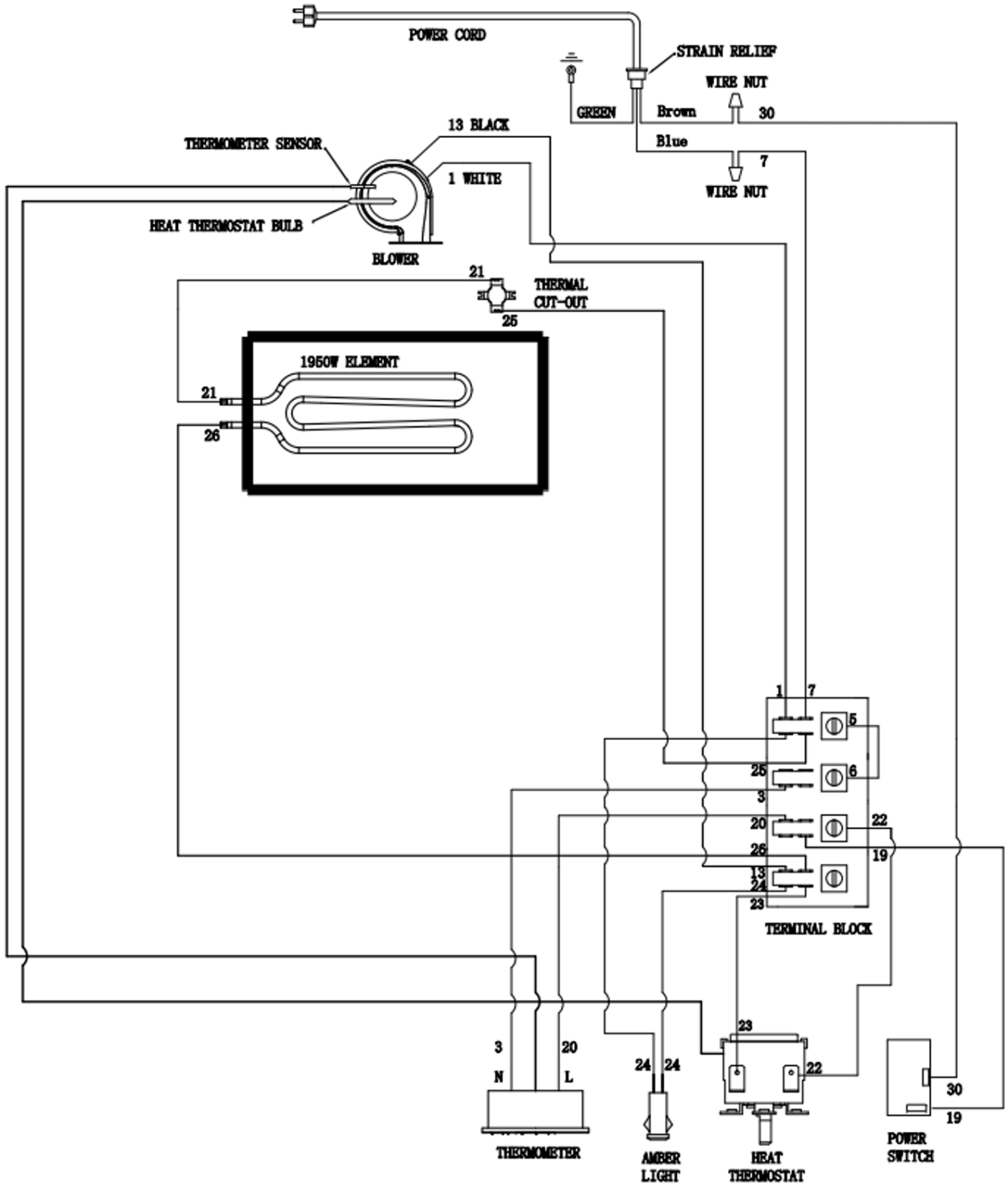
Item	Description	Qty	Item	Description	Qty
1	Bottom Cover Slide Track	2	12	Module Chassis	1
2	Bottom Cover	1	13	Air Discharge Cover	1
3	Control Panel	1	14	Intake Cover	1
4	Digital Thermometer	1	15	Power Cord	1
5	Amber Light	1	16	Strain Relief Bushing	1
6	Thermostat Knob	1	17	Power Cord Bracket	1
7	Power Switch	1	18	Thermal Cut-Out	1
8	Control Panel, Pc	1	19	Blower Intake	1
9	Thermostat	1	20	Blower	1
10	Electrical Support	1	21	Heating Element, M-Shaped 120v 1950w	1
11	Terminal Block	1	22	Air Duct	1

# Electrical Box (ATHC-9ES & ATHC-18ES)

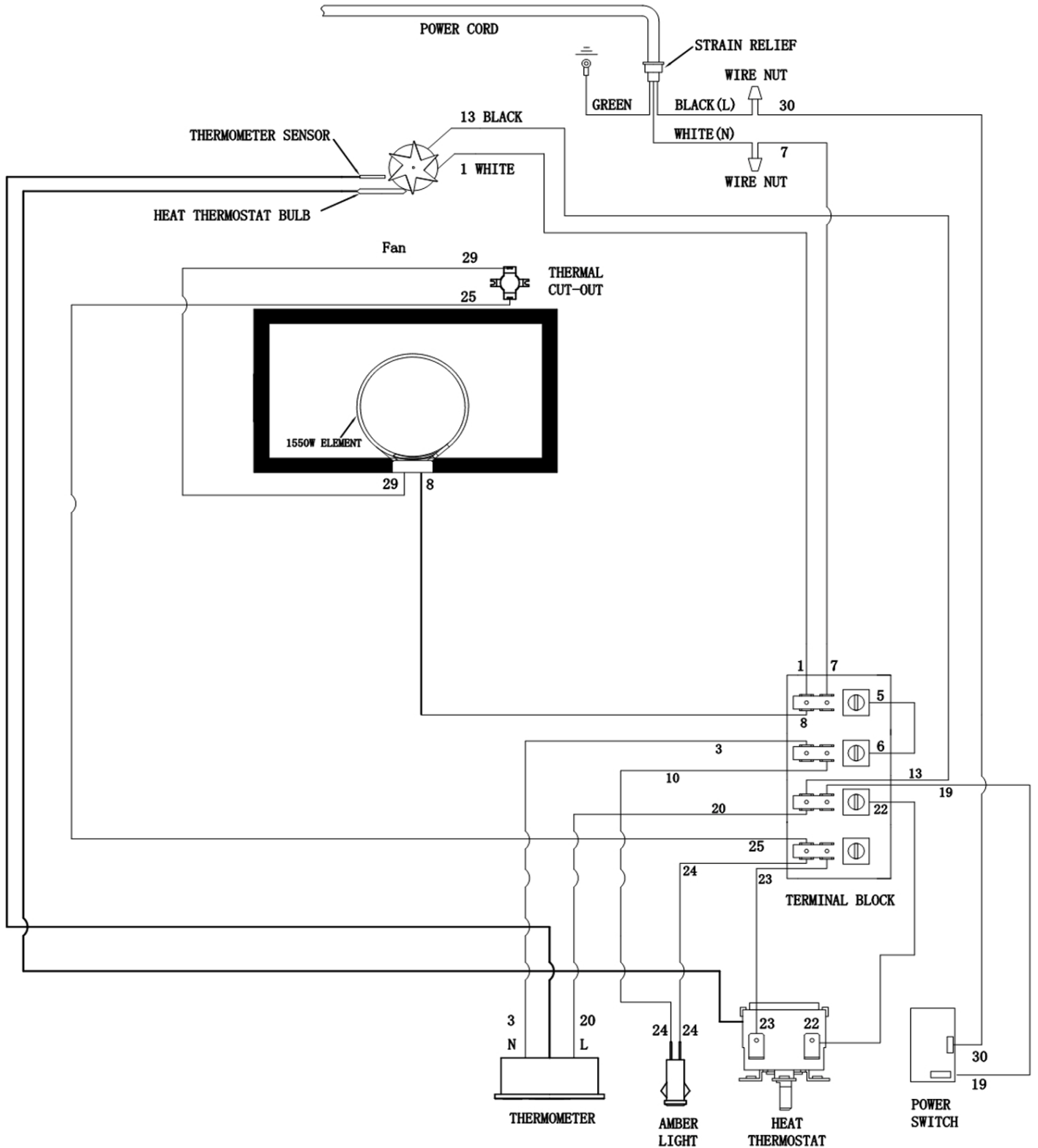


Item	Description	Qty	Item	Description	Qty
1	Control Panel	1	10	Power Cord Bracket	1
2	Power Switch	1	11	Electrical Support	1
3	Thermostat	1	12	Heating Element, 120v 1550w	1
4	Amber Light	1	13	Thermal Cut-Out	1
5	Digital Thermometer	1	14	Rear Electric Heating Tube Box	1
6	Control Panel, Pc	1	15	Oven Fan (Clockwise)	1
7	Module Chassis	1	16	Lower Cover Of Control Box	1
8	Air Discharge Cover	1	17	Control Box Slide Rail	2
9	Electric Box Support	1			

# Wiring Diagram (ATHC-9-ES & ATHC-18-ES)



# Wiring Diagram (ATWC-12 & ATWC-24)





**Intertek**



**Intertek**

Conforms to UL STD.197

Conforms to NSF STD.4

4003935




**NOTE:** Energy Star is for ATHC ONLY.



THANK YOU FOR YOUR PURCHASE OF AN ATOSA PRODUCT  
YOUR SINGLE SOURCE DIVERSIFIED GLOBAL SOLUTION



 Toll Free: (855) 855-0399

 [info@atosausa.com](mailto:info@atosausa.com)

 [www.atosausa.com](http://www.atosausa.com)